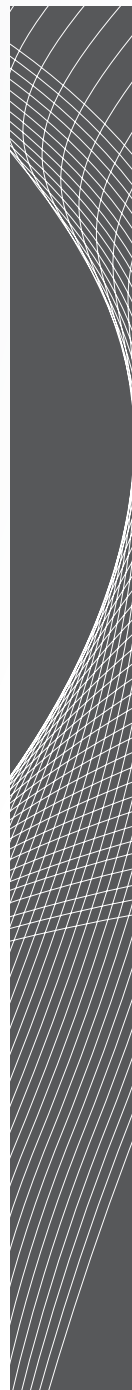
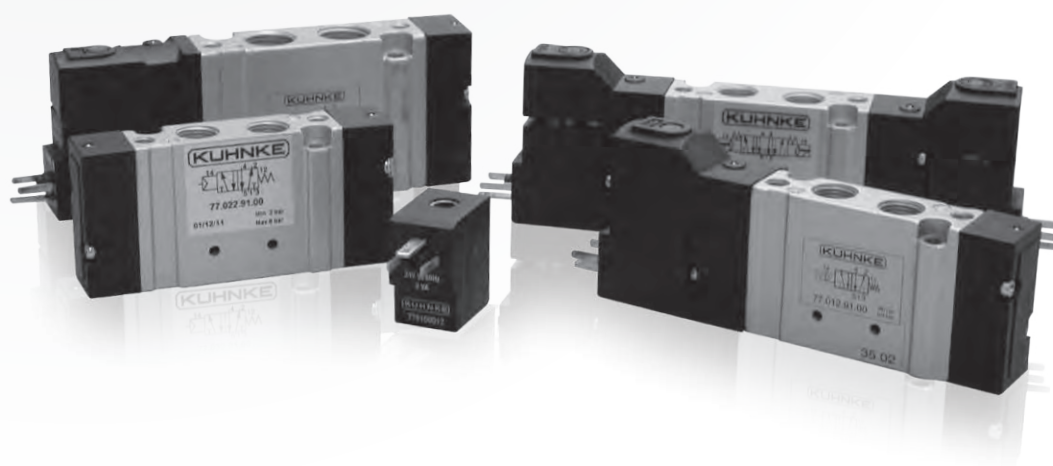
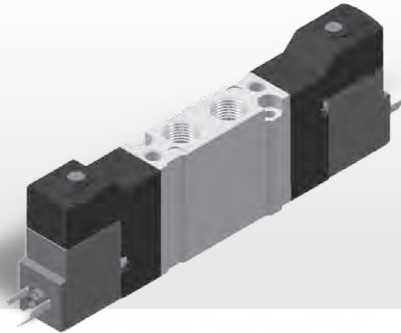


SERIES 77 COMPACT VALVES



COMPACT VALVES

General Information

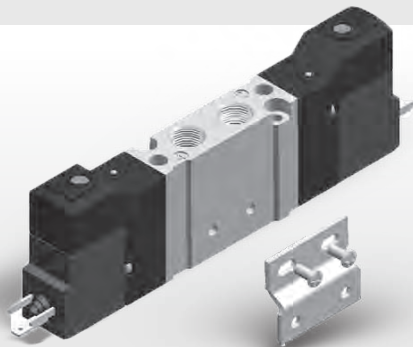
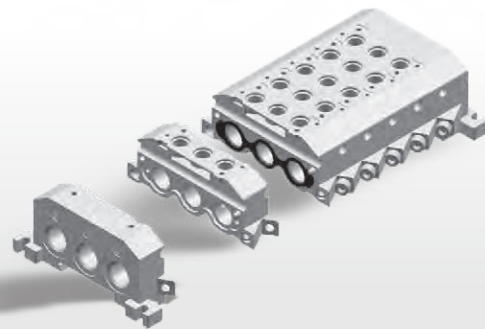


Our 77 series of electrically or pneumatically operated directional control valves are available for single or modular use. The LPP700 range has a 15 mm body width and the larger LPP772 has 18 mm

These robust long life valves have been independently tested to 33million duty cycles (5/2) and 25 million (3/2)

Options for external pilot supply are available for both types of valve (LPP700 and LPP772) enabling low pressure and vacuum use

Any combination of valve sizes and functions can be combined into modules or valve islands, with standard, Sub-D, and fieldbus connection options



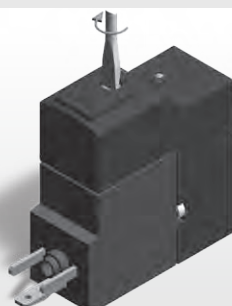
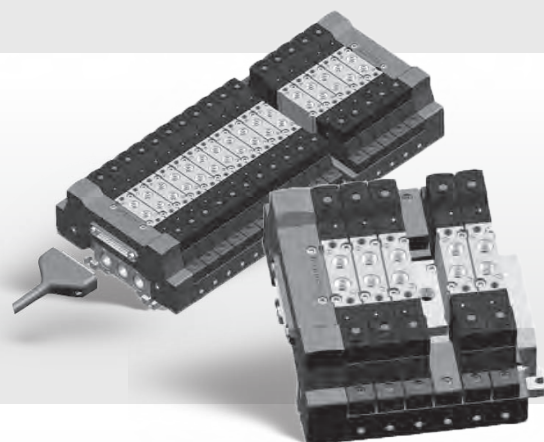
Maximum Flexibility

Mounting Flange Available

Matching interface: It is possible to assemble 15 mm (770) and 18 mm (772) valves together using the matching interface

Different pressures and Intermediate pressure supply

Double sided Sub-D supply and double number of positions using two Sub-D input modules



Manual Override Available

1. Button not actuated
2. Push actuation (pushing the button with a screwdriver)
3. Lock actuation (pushing and turning the button clockwise with a screwdriver)

General Information

| Version | Type | Section | Pressure range | Pressure connection | Flowrate Q | Nominal orifice | Manual override |
|---------|------------------------|---------|----------------|---------------------|-------------|-----------------|-----------------|
| LPP770 | 2 x 3/2-way 5/3-way | A | 3 - 8 bar | G 1/8 G 1/4 | 600 NI/min | 6 mm | Push and lock |
| | 5/2-way | | 2 - 8 bar | | 800 NI/min | | |
| LPP772 | 2 x 3/2-way 5/3-way | B | 3 - 8 bar | G 1/8 G 1/4 | 700 NI/min | 8 mm | Push and lock |
| | 5/2-way | | 2 - 8 bar | | 1200 NI/min | | |

Electrical connections: Coil with 3 spade connectors + plug in socket (order both separately)

Sealing element: Soft spool

Protection classification: IP 65 (with plug-in socket)

Mounting: Any position

Operating medium: 5 micron filtered, lubricated (or not) compressed air; also suitable for other media conforming to ISO-VG 10

Ambient temperature range: From -5 °C up to +50 °C

Order Code (single use valves)

| Order specifications | | 77. | 0 | 1 | 2. | 91. | 00 |
|-----------------------|----------------------------------|-----|---|---|----|-----|----|
| Series No. | | 77 | | | | | |
| Valves dimension | | | | | | | |
| | 15 mm valve | | 0 | | | | |
| | 18 mm valve | | 2 | | | | |
| Actuation | | | | | | | |
| Version | solenoid | | | 1 | | | |
| | pneumatic connection | | | 2 | | | |
| | solenoid, external feeding | | | 3 | | | |
| Pneumatic connections | | | | | 2 | | |
| Stroke | standard | | | | | | |
| | 5/2 monostable, pneumatic return | | | | | 90 | |
| | 5/2 monostable, spring return | | | | | 91 | |
| | 5/2 bistable | | | | | 92 | |
| | 5/2 bistable with priority | | | | | 93 | |
| | 5/3, all ports closed | | | | | 12 | |
| | 5/3, all ports exhaust | | | | | 22 | |
| | 5/3, all ports pressurized | | | | | 32 | |
| | 2 x 3/2 normally closed | | | | | 14 | |
| | 2 x 3/2 normally open | | | | | 24 | |
| | 2 x 3/2 open / closed | | | | | 34 | |
| without coils | | | | | | | 00 |

This order number refers to the valve without coil. Please order the respective coil separately.

| | | | | | | | |
|------------------|-----|---|---|----|-----|-----|-------|
| Special versions | KP. | 2 | 2 | 2. | 93. | 00. | zzzz* |
|------------------|-----|---|---|----|-----|-----|-------|

* zzzz = project number (assigned by factory)

Order Code (valve islands)

| Order specifications | | 77. | 0 | T. | 04 | M. | 3218 |
|--------------------------------------|---|-----|---|----|----|----|------|
| Series No. | | 77 | | | | | |
| Valves dimension | | | | | | | |
| Connection | 15 mm valve | | 0 | | | | |
| | 18 mm valve | | 2 | | | | |
| Valves Number | Parallel | | | T | | | |
| | Sub-D (only for 15 mm) | | | S | | | |
| | Profibus (only for 15 mm) | | | P | | | |
| | CANopen (only for 15 mm) | | | C | | | |
| System | No. of subplates | | | | xx | | |
| Project Number | Modular base | | | | | M | |
| | Subplates with fixed length (only upon request) | | | | | P | |
| Project number (assigned by factory) | | | | | | | zzzz |

This order number refers to the valve without coil. Please order the respective coil separately.

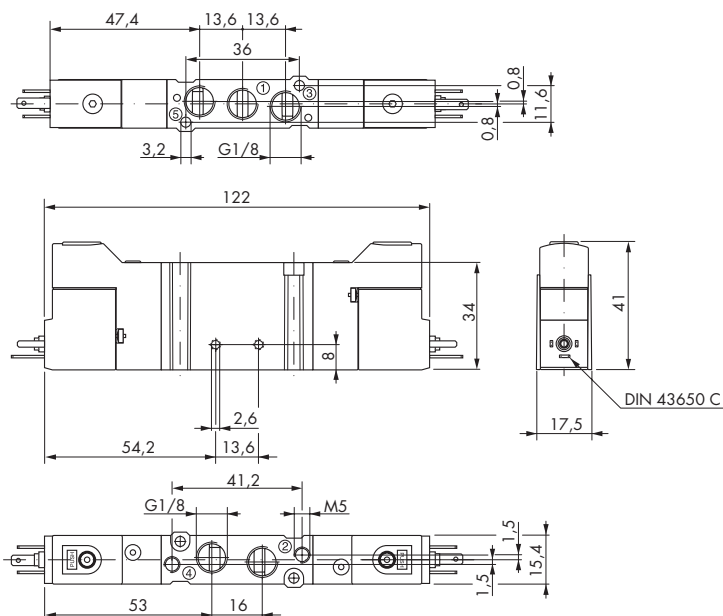
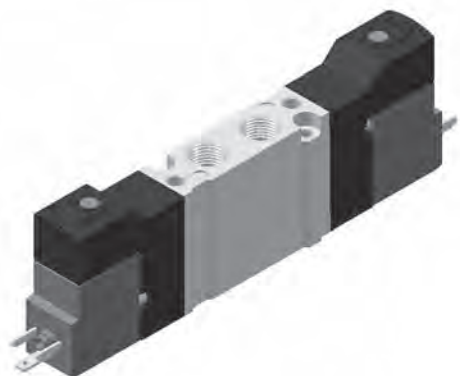
LPP770 VALVES

2 x 3/2-way, 5/2-way and 5/3-way Solenoid Valves - G 1/8 (D_{nom} 6 mm)

SECTION A

Press. Conn.: G 1/8

Coil Type: 77.610.xx.xx (order separately)



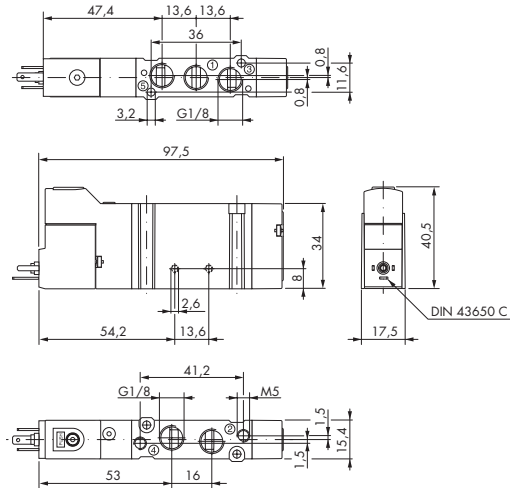
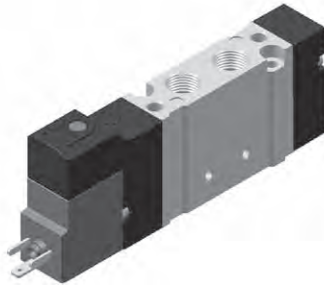
| Code | Type | Symbol | Code | Type | Symbol |
|--------------|--|--------|--------------|--|--------|
| 77.012.14.00 | 2 x 3/2 Normally closed | | 77.032.92.00 | 5/2 External feeding | |
| 77.012.24.00 | 2 x 3/2 Normally open | | 77.032.93.00 | 5/2 With priority External feeding | |
| 77.012.34.00 | 2 x 3/2 Open / closed | | 77.012.12.00 | 5/3 All ports closed | |
| 77.032.14.00 | 2 x 3/2 Normally closed External feeding | | 77.012.22.00 | 5/3 All ports exhaust | |
| 77.032.24.00 | 2 x 3/2 Normally open External feeding | | 77.012.32.00 | 5/3 All ports pressurized | |
| 77.032.34.00 | 2 x 3/2 Open / closed External feeding | | 77.032.12.00 | 5/3 All ports closed External feeding | |
| 77.012.92.00 | 5/2 | | 77.032.22.00 | 5/3 All ports exhaust External feeding | |
| 77.012.93.00 | 5/2 With priority | | 77.032.32.00 | 5/3 All ports pressurized External feeding | |

5/2-way Solenoid Valves - G 1/8 (D_{nom} 6 mm)

SECTION A

Press. Conn.: G 1/8

Coil Type: 77.610.xx.xx (order separately)

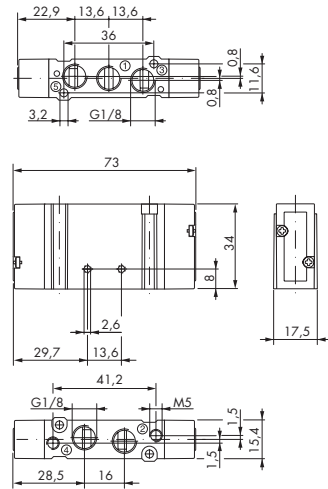


| Code | Type | Symbol | Code | Type | Symbol |
|--------------|--|--------|--------------|--|--------|
| 77.012.90.00 | 5/2 Monostable Return air assisted | | 77.032.90.00 | 5/2 Monostable External feeding Return air assisted | |
| 77.012.91.00 | 5/2 Monostable Spring return | | 77.032.91.00 | 5/2 Monostable External feeding Spring return | |

5/2-way and 5/3-way Pneumatic Valves - G 1/8 (D_{nom} 6 mm)

SECTION A

Press. Conn.: G 1/8

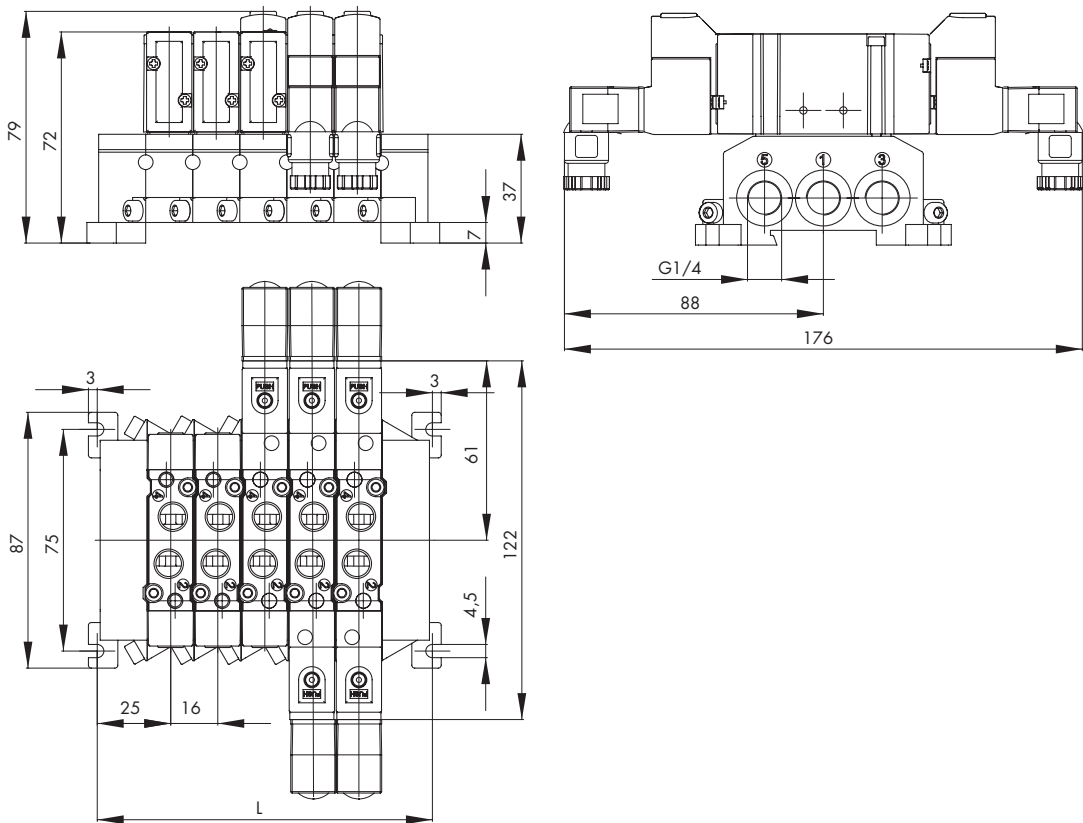
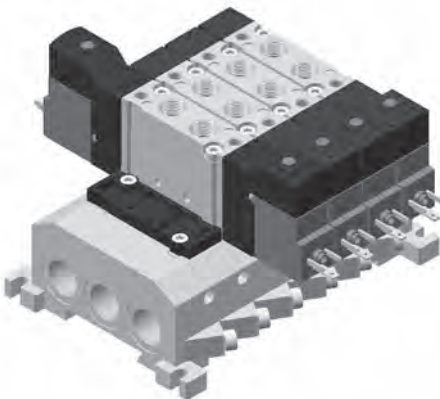


| Code | Type | Symbol | Code | Type | Symbol |
|--------------|------------------------------------|--------|--------------|----------------------------------|--------|
| 77.022.90.00 | 5/2 Monostable | | 77.022.92.00 | 5/2 Bistable | |
| 77.022.91.00 | 5/2 Monostable Spring return | | 77.022.93.00 | 5/2 Bistable With priority | |
| 77.022.12.00 | 5/3 All ports closed | | 77.022.14.00 | 2 x 3/2 Normally closed | |
| 77.022.22.00 | 5/3 All ports exhaust | | 77.022.24.00 | 2 x 3/2 Normally open | |
| 77.022.32.00 | 5/3 All ports pressurized | | 77.022.34.00 | 2 x 3/2 Open / closed | |

Subplates System LPP770 - Valve Island

SECTION A

SERIES 77
LPP770



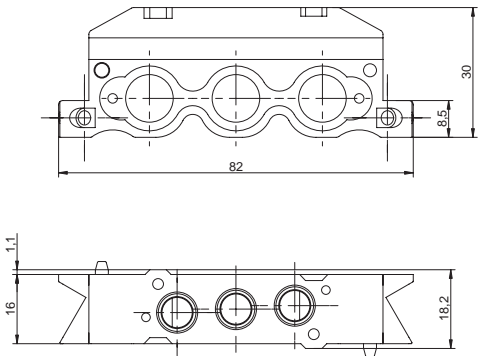
Number of Station

| Nr | 2 | 3 | 4 | 5 | 6 | 7 | 8 | 9 | 10 | 11 | 12 | 13 | 14 | 15 | 16 | 17 | 18 | 19 | 20 |
|----|----|----|----|-----|-----|-----|-----|-----|-----|-----|-----|-----|-----|-----|-----|-----|-----|-----|-----|
| L | 66 | 82 | 98 | 114 | 130 | 146 | 162 | 178 | 194 | 210 | 226 | 242 | 258 | 274 | 290 | 306 | 322 | 338 | 354 |

Subplates System LPP770 - Subplates

SECTION A

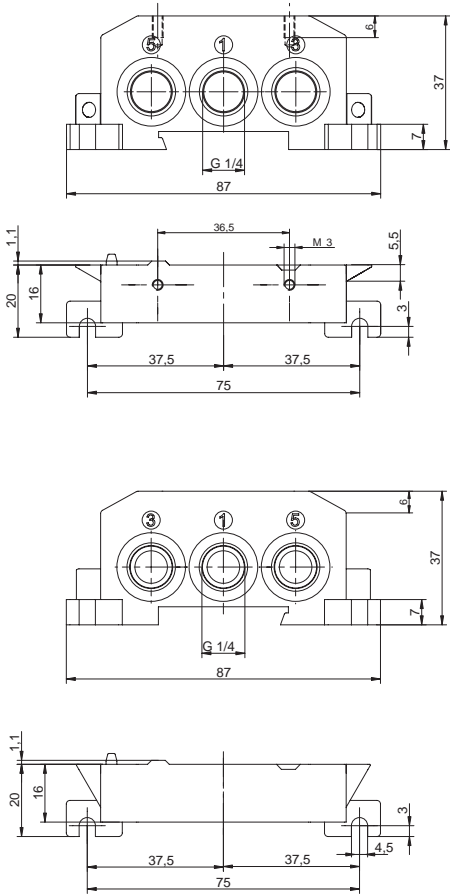
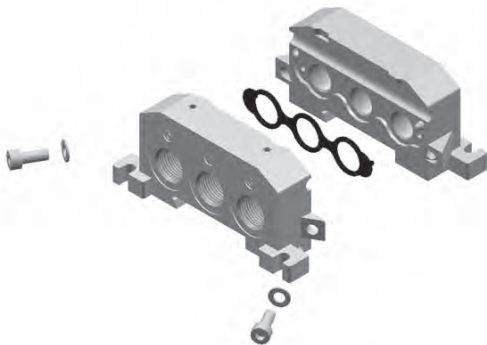
SERIES 77
LPP770



| Product | Code |
|--|--------------|
| Subplate kit | 77.040.00.13 |
| Subplate kit closed <i>(the subplate is closed on the right side, the one opposite the seal seat)</i> | 77.040.00.14 |
| Subplate kit mixed <i>(the subplate is closed on the "P" and open in the exhaust)</i> | 77.040.00.15 |

Subplates System LPP770 - Endplates

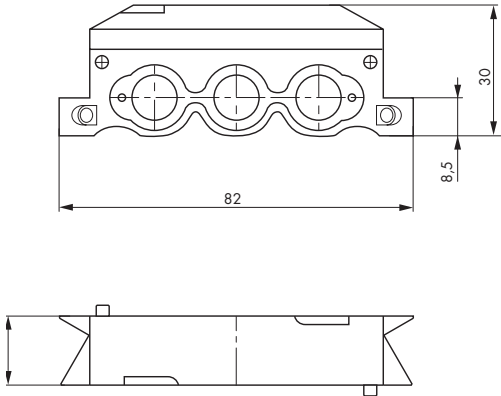
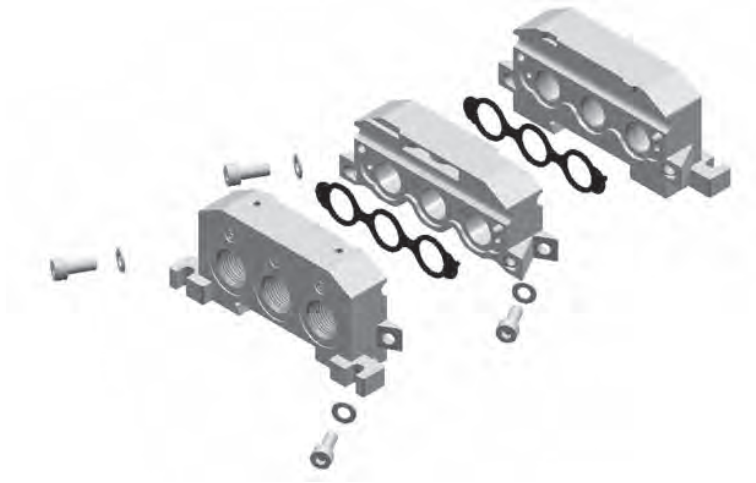
SECTION A



| Product | Code |
|--|--------------|
| Endplates kit, one side feeding <i>(left and right module)</i> | 77.040.00.18 |
| Endplates kit, both side feeding <i>(left and right module)</i> | 77.040.00.19 |

Subplates System LPP770 - Modules for Matching Interface

SECTION A

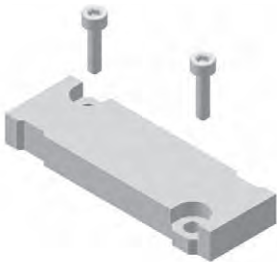


SERIES 77
LPP770

| Product | Code |
|--|--------------|
| Interface kit 77.0 and 77.2 (15 mm/18 mm, the kit include left, right and matching interface modules) | 77.040.15.18 |

Subplates System LPP770 - Accessories

SECTION A



Blanking plate

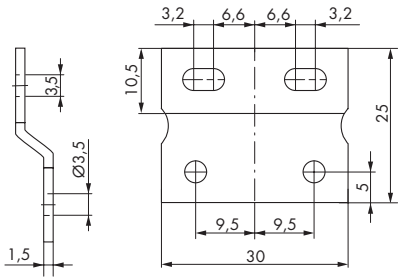


Intermediate supply



Mounting bracket

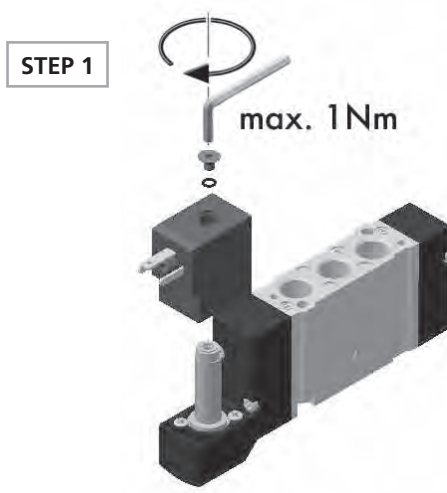
| Product | Code |
|---------------------|--------------|
| Blanking plate | 77.040.00.20 |
| Intermediate supply | 77.040.00.40 |
| Mounting bracket | 77.040.00.30 |



Mounting Instructions

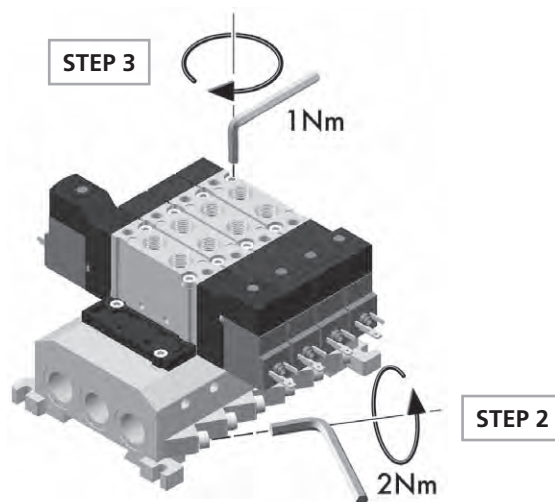
SECTION A

Assembly of solenoid systems



Assembly of valves and subplates to valve islands.

Fasten the screws alternately

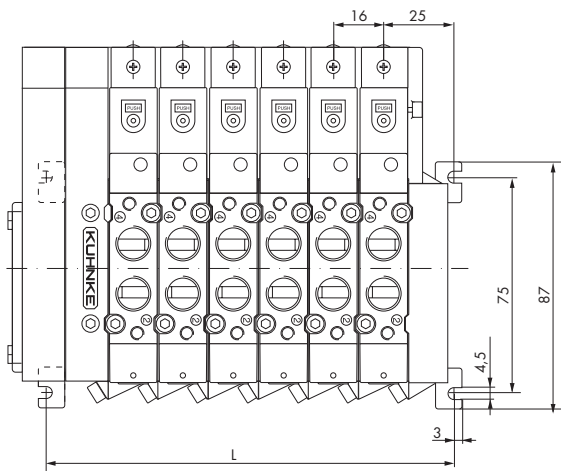
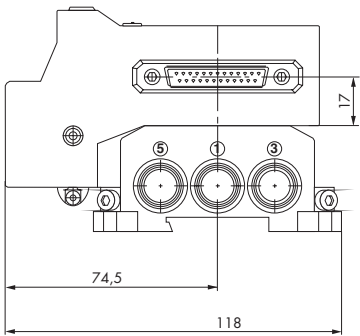
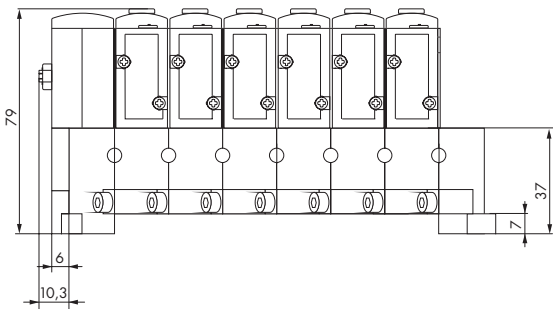
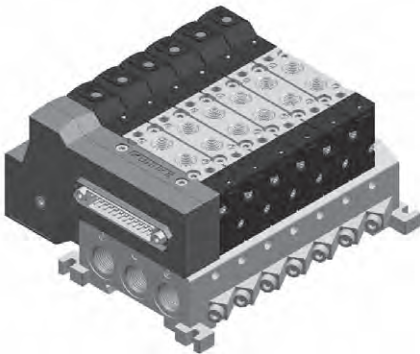


SUB-D ISLAND

Modular System - Sub-D Valve Island - Monostable

SECTION A

- Valves Number: Up to 18 valve positions
- Connectors: Sub-D connector 25 pin
- Valves Type: 5/2-way monostable
- Coil Type: 77.610.00.06 (24 VDC)



| Nr | 2 | 3 | 4 | 5 | 6 | 7 | 8 | 9 | 10 | 11 | 12 | 13 | 14 | 15 | 16 | 17 | 18 |
|----|----|----|----|-----|-----|-----|-----|-----|-----|-----|-----|-----|-----|-----|-----|-----|-----|
| L | 66 | 82 | 98 | 114 | 130 | 146 | 162 | 178 | 194 | 210 | 226 | 242 | 258 | 274 | 290 | 306 | 322 |

SERIES 77
SUB-D ISLAND

Modular System - Sub-D Valve Island - Bistable

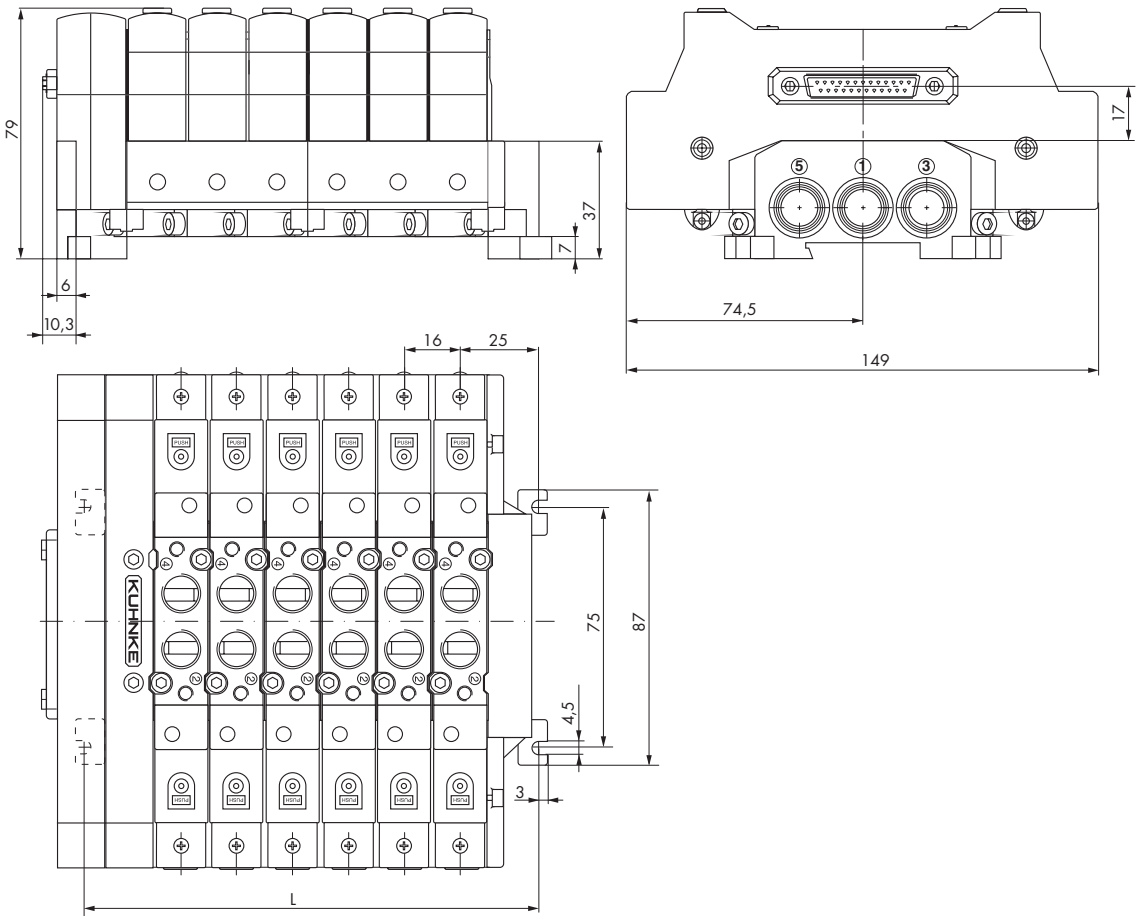
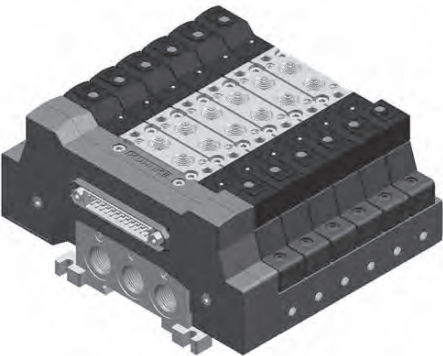
SECTION A

Valves Number: Up to 11 valve positions

Connectors: Sub-D connector 25 pin

Valves Type: 5/2-way bistable; 2x3/2-way; 5/3-way

Coil Type: 77.610.00.06 (24 VDC)



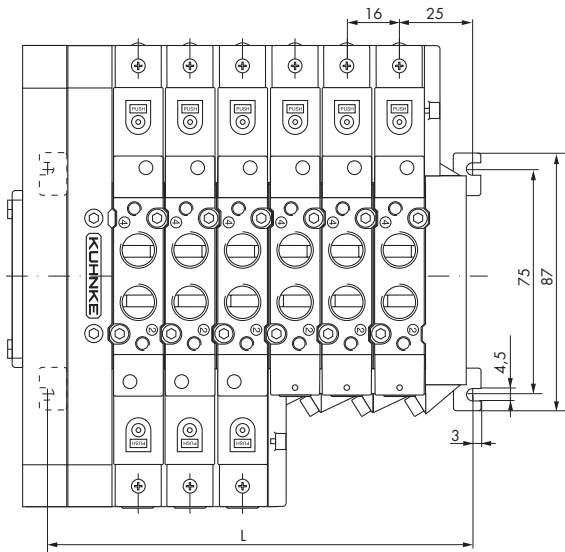
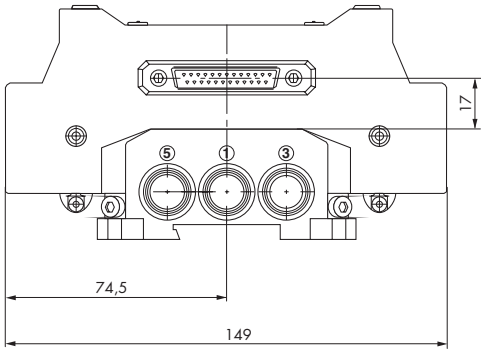
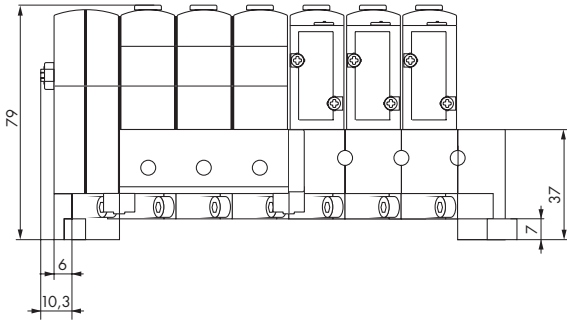
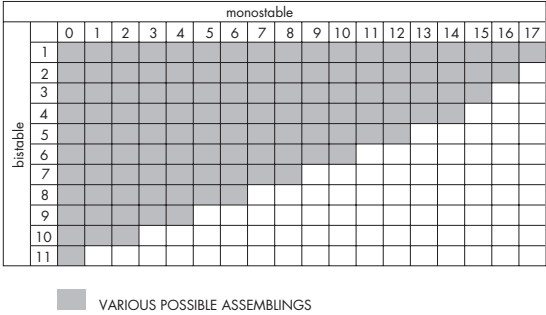
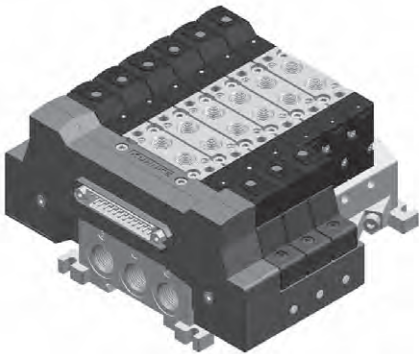
| Nr | 2 | 3 | 4 | 5 | 6 | 7 | 8 | 9 | 10 | 11 |
|----|----|----|----|-----|-----|-----|-----|-----|-----|-----|
| L | 66 | 82 | 98 | 114 | 130 | 146 | 162 | 178 | 194 | 210 |

SERIES 77
SUB-D ISLAND

Modular System - Sub-D Valve Island - Mixed Configuration

SECTION A

Valves Type: 5/2-way mono and bistable; 2x3/2-way; 5/3-way
Coil Type: 77.610.00.06 (24 VDC)

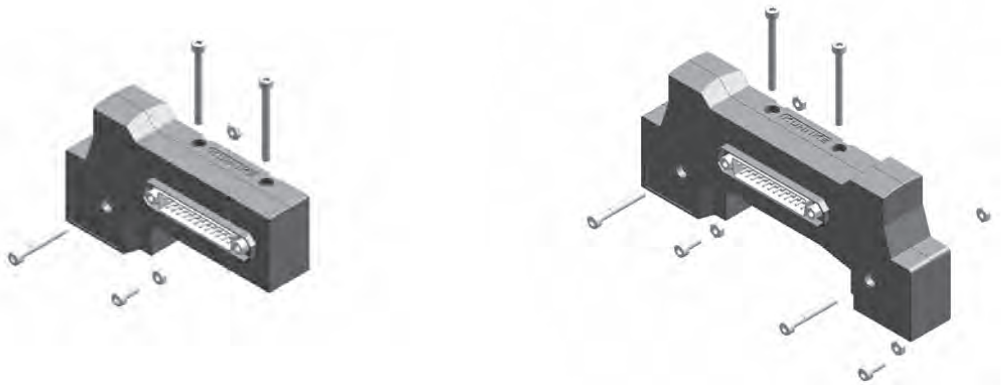


| Nr | 2 | 3 | 4 | 5 | 6 | 7 | 8 | 9 | 10 | 11 | 12 | 13 | 14 | 15 | 16 | 17 | 18 |
|----|----|----|----|-----|-----|-----|-----|-----|-----|-----|-----|-----|-----|-----|-----|-----|-----|
| L | 66 | 82 | 98 | 114 | 130 | 146 | 162 | 178 | 194 | 210 | 226 | 242 | 258 | 274 | 290 | 306 | 322 |

SERIES 77
SUB-D ISLAND

Sub-D Valve Island Components - Input Module

SECTION A



| Version | Code |
|-------------------------|---------|
| Input Module Monostable | 77.0IMM |
| Input Module Bistable | 77.0IMB |

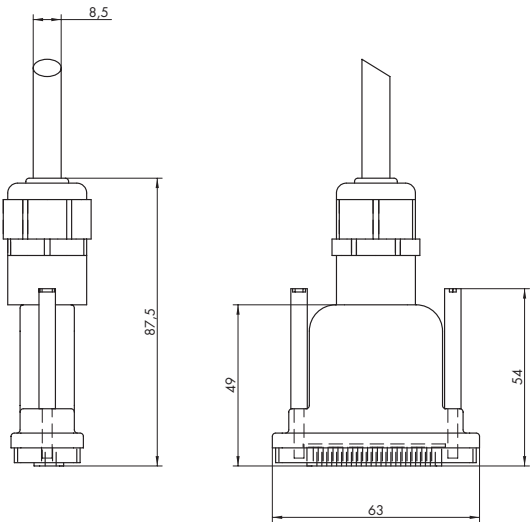
Sub-D Valve Island Components - Sub-D Connector IP 65

SECTION A



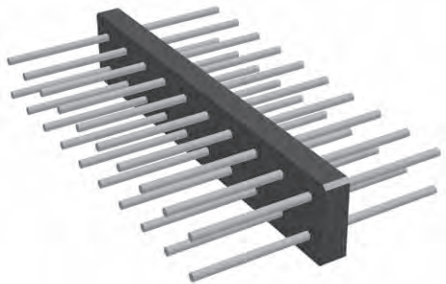
| Code |
|--------|
| 77.CAB |

Note: Cable length 5 m.



Sub-D Valve Island Components - Pin Strip

SECTION A

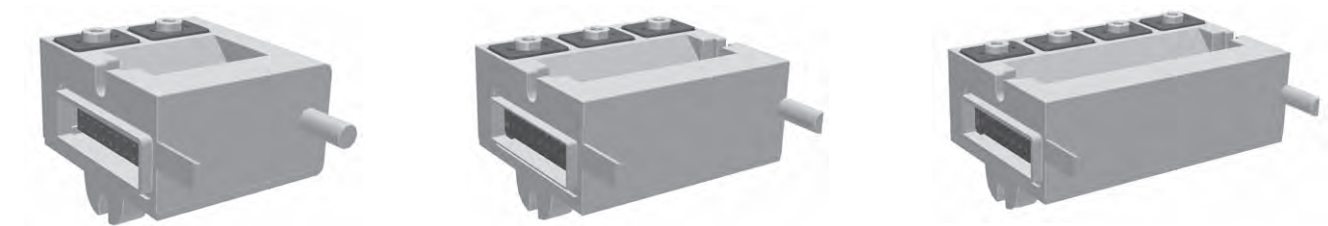


| Code |
|---------|
| 77.0PIN |

Note: The shipment includes 10 pcs.

Sub-D Valve Island Components - Connection Modules

SECTION A



| Module position | Side | Code |
|-------------------------------|-------|---------|
| Connection Module 2 positions | right | 77.0M2R |
| | left | 77.0M2L |
| Connection Module 3 positions | right | 77.0M3R |
| | left | 77.0M3L |
| Connection Module 4 positions | right | 77.0M4R |
| | left | 77.0M4L |

Note: The connection module 2 positions can be used only as end module.

Sub-D Valve Island Components - End-cap for Connection Module 3 and 4 Positions

SECTION A



| Code | Side |
|----------|-------|
| 77.0ENDR | Right |
| 77.0ENDL | Left |

Sub-D Valve Island Components - Blind Plug for Unused Electrical Position

SECTION A

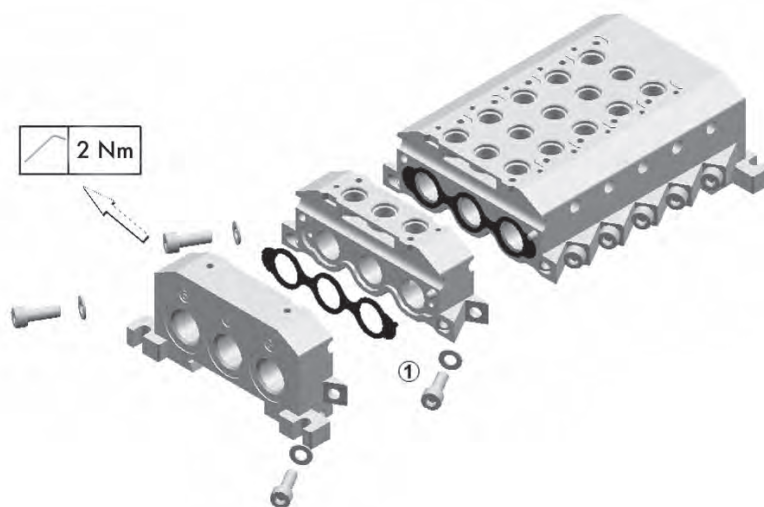


| Code |
|----------|
| 77.0PLUG |

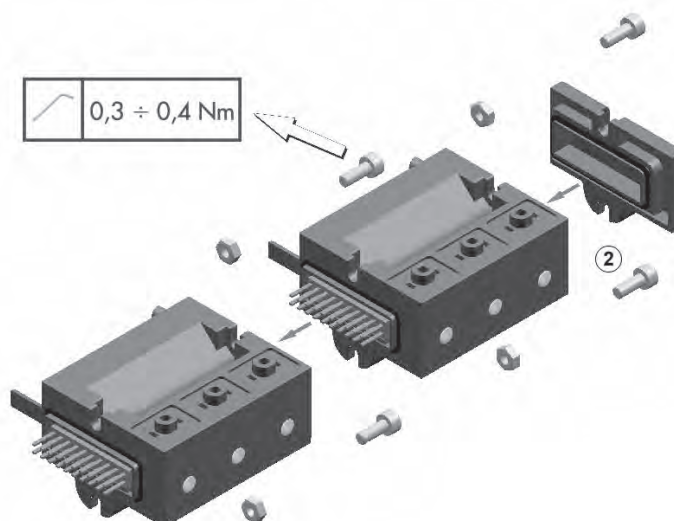
Mounting Instructions

SECTION A

STEP 1 - Assembly of the subplates



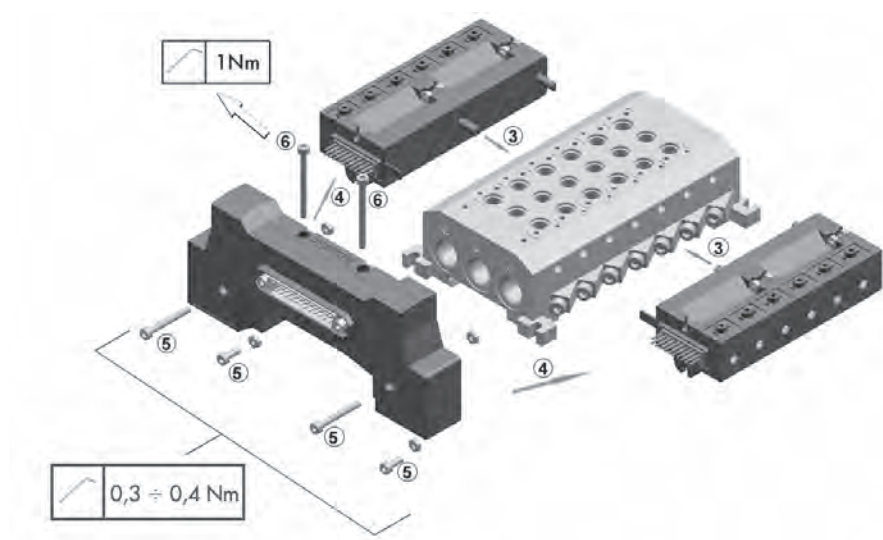
STEP 2 - Assembly of the connecting modules



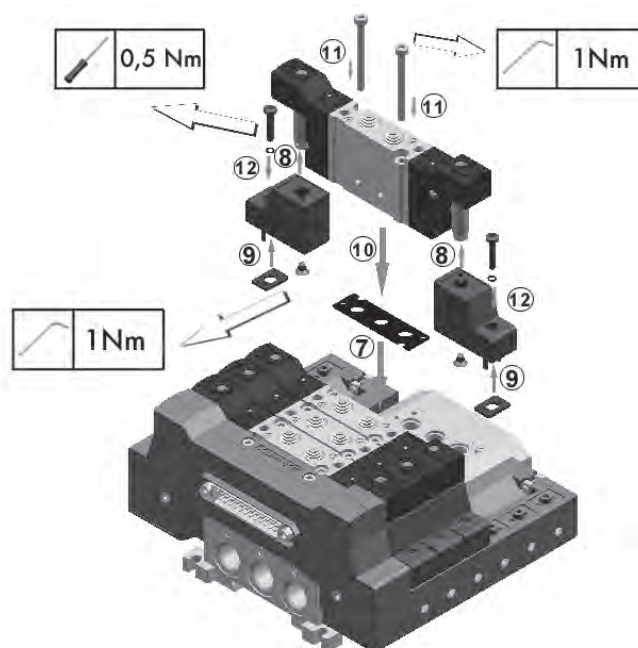
Mounting Instructions

SECTION A

STEP 3 - Mounting of the modules to the subplates

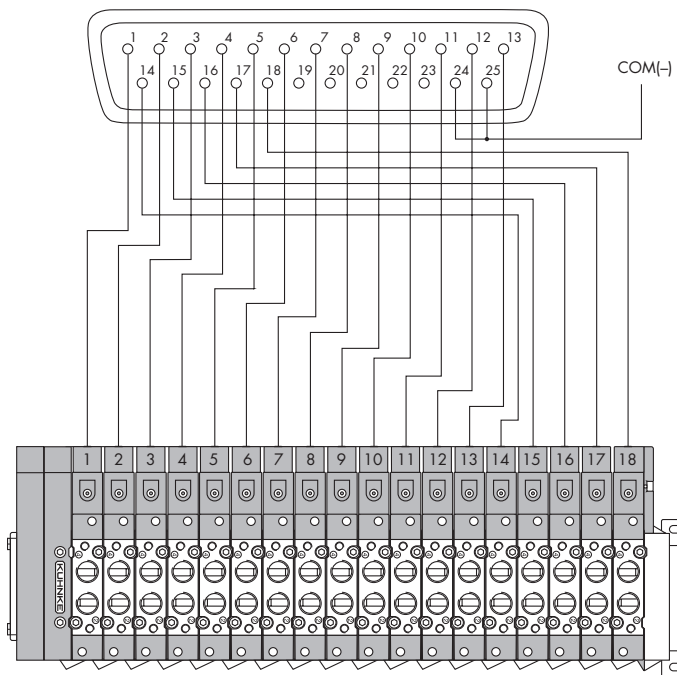


STEP 4 - Assembly of the valves



Wiring 25 pin Connector - Monostable Input

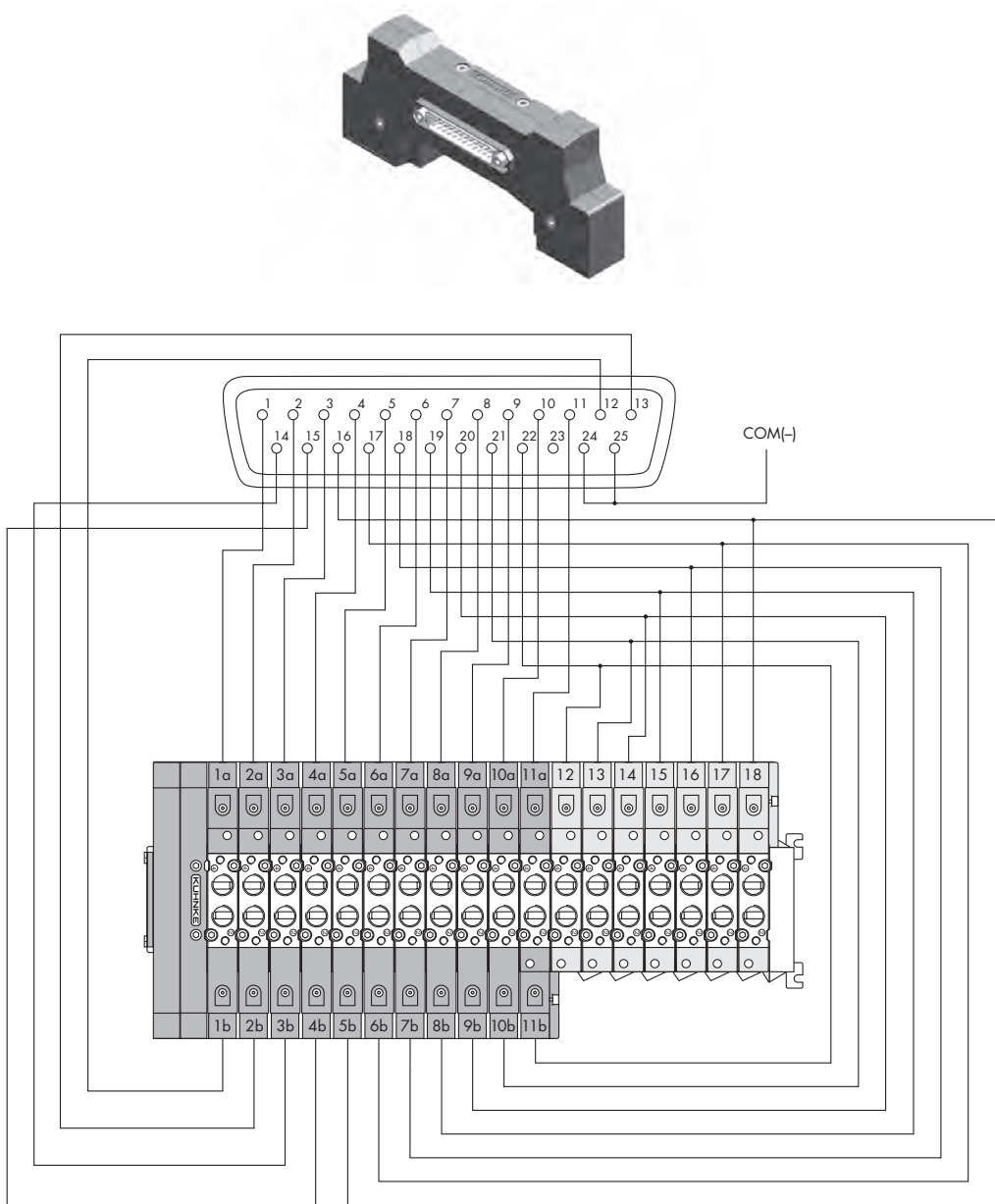
SECTION A



| Pin No. Sub-D connector | 1 | 2 | 3 | 4 | 5 | 6 | 7 | 8 | 9 | 10 | 11 | 12 | 13 |
|--------------------------------|----------|----------|----------|----------|----------|-----------|-----------|-----------|----------|----------|-----------|-----------|----------|
| Colour of insulation | BN brown | BN brown | RD red | RD red | RD red | OR orange | OR orange | OR orange | PK pink | PK pink | YE yellow | YE yellow | GN green |
| Colour of identification strip | | WT white | | WT white | BK black | | WT white | BK black | | BK black | | BK black | (dark) |
| Pin No. Sub-D connector | 14 | 15 | 16 | 17 | 18 | 19 | 20 | 21 | 22 | 23 | 24 | 25 | |
| Colour of insulation | GN green | GN green | GN green | BU blue | BU blue | VT violet | VT violet | GY grey | GY grey | WT white | BK black | BK black | |
| Colour of identification strip | WT white | BK black | (bright) | | WT white | | WT white | | BK black | | | GY grey | |

Wiring 25 pin Connector - Bistable Input

SECTION A



| Pin No. Sub-D connector | 1 | 2 | 3 | 4 | 5 | 6 | 7 | 8 | 9 | 10 | 11 | 12 | 13 |
|--------------------------------|----------|----------|----------|----------|----------|-----------|-----------|-----------|----------|----------|-----------|-----------|----------|
| Colour of insulation | BN brown | BN brown | RD red | RD red | RD red | OR orange | OR orange | OR orange | PK pink | PK pink | YE yellow | YE yellow | GN green |
| Colour of identification strip | | WT white | | WT white | BK black | | WT white | BK black | | BK black | | BK black | (dark) |
| Pin No. Sub-D connector | 14 | 15 | 16 | 17 | 18 | 19 | 20 | 21 | 22 | 23 | 24 | 25 | |
| Colour of insulation | GN green | GN green | GN green | BU blue | BU blue | VT violet | VT violet | GY grey | GY grey | WT white | BK black | BK black | |
| Colour of identification strip | WT white | BK black | (bright) | | WT white | | WT white | | BK black | | | GY grey | |

SERIES 77
SUB-D ISLAND

FIELD BUS ISLAND

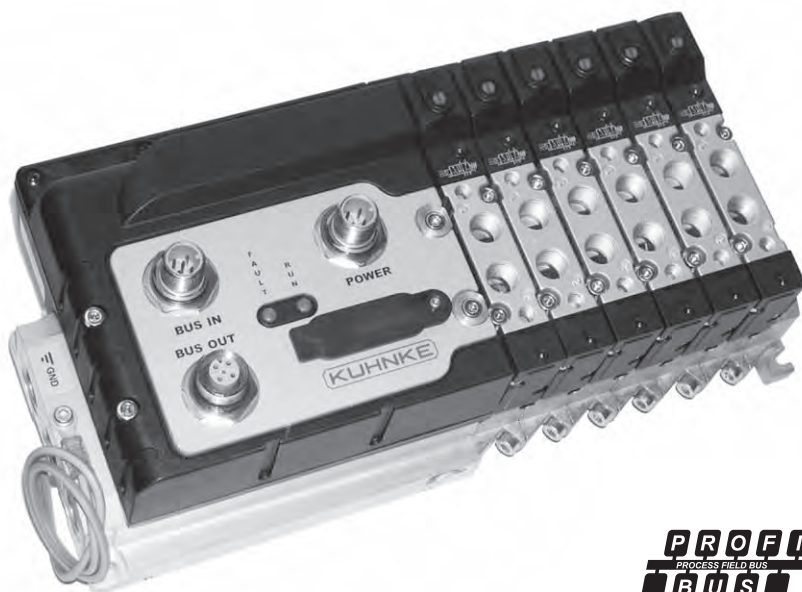
Valve Islands with Fieldbus Interfaces

SECTION A

Our 15mm body valves, LPP 770, can be assembled into valve islands with a choice of 2 fieldbus interfaces, either Profibus DP or CANopen. Up to 18 valves with a total of 22 coils can be mounted in one valve island, providing a mix of bistable and monostable valves as

required. Users will already have selected the appropriate fieldbus, and our valve island will occupy one node on the network. We also offer digital I/O modules.

| | |
|-----------------------------|---|
| Voltage: | 24 VDC |
| Voltage tolerance: | ± 10% |
| Duty cycle: | Continuous 100% |
| Protection class: | IP65 |
| Baud rate: | Profibus-DP 12 Mbit/s, CANopen 1 Mbit/s |
| Max. No. of nodes: | Profibus-DP: 32/127 / CANopen: 127 |
| Ambient Temperature: | From 0 °C to +50 °C |



PROFI
PROCESS FIELD BUS
BUS CANopen

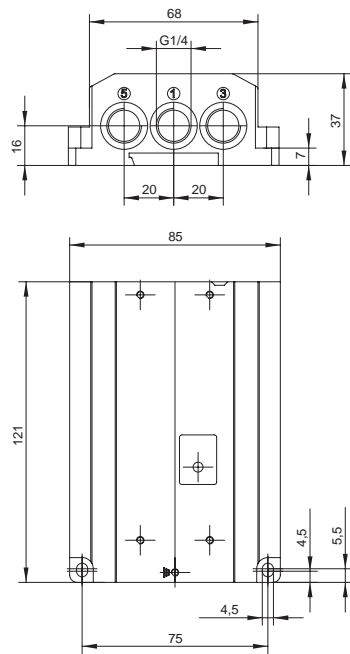
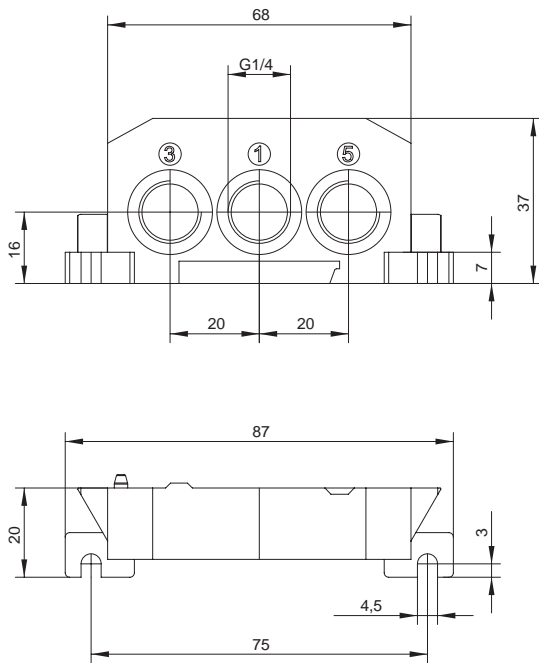
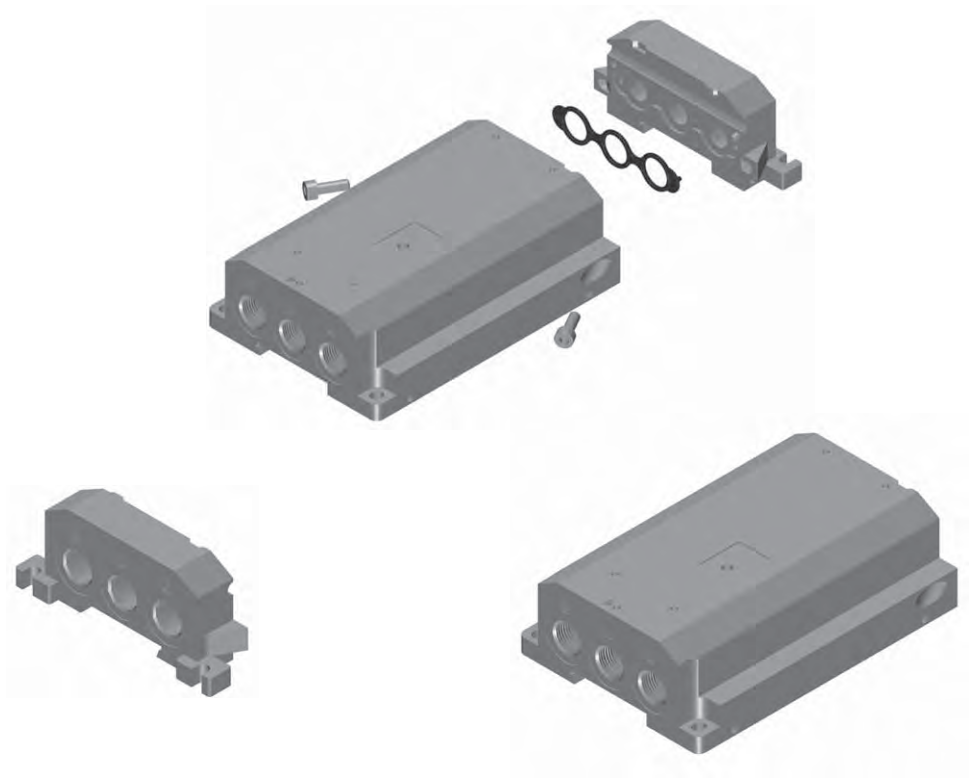
The LPP valve island bus interface can actuate up to 22 solenoid coils (outputs) in various valve configurations. In most bus systems you will also need signal inputs associated with each valve's function (typically sensors). Use our PROFIBUS DP or CANopen I/O stations, either Profi I/O 690 or CnControl I/O 691, which are ideal.

Baud rates of up to 12Mbit/sec are possible with our PROFIBUS DP devices.

LPP valve islands are IP65 rated (with all ports connected) and DIN rail or surface mountable.

Modular Fieldbus Valve Island - Endplates

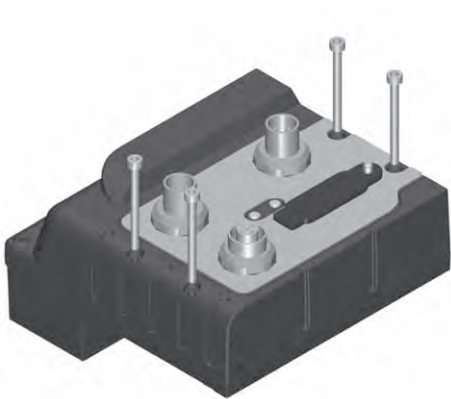
SECTION A



| Product | Code |
|---|-------------|
| Endplates kit, one side feeding (left and right module) | 77.04F.0018 |
| Endplates kit, both side feeding (left and right module) | 77.04F.0019 |

Modular Fieldbus Valve Island - Input Module Monostable

SECTION A

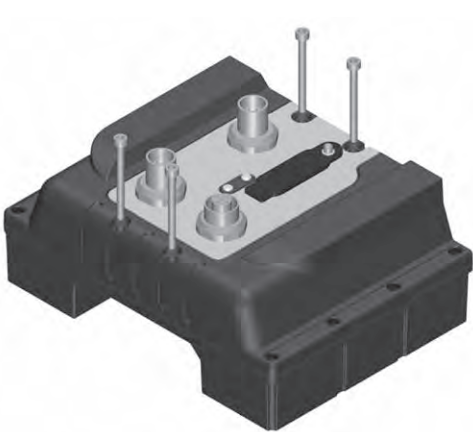


| Fieldbus | Code |
|-------------|---------|
| CANopen | 77.0CMM |
| Profibus DP | 77.0PMM |

Note: The fieldbus input modules are assembled with Sub-D connection modules.

Modular Fieldbus Valve Island - Input Module Bistable

SECTION A

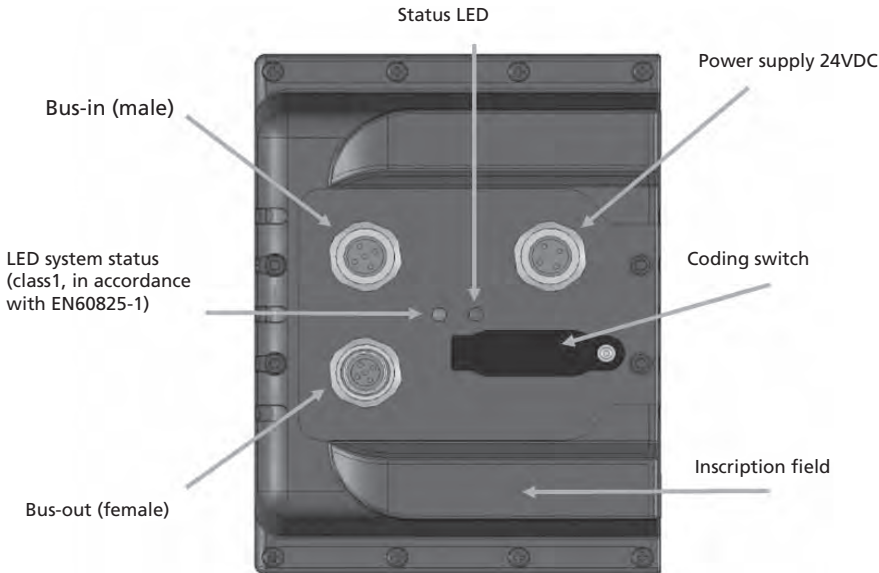


| Fieldbus | Code |
|-------------|---------|
| CANopen | 77.0CMB |
| Profibus DP | 77.0PMB |

Note: The fieldbus input modules are assembled with Sub-D connection modules.

Modular Fieldbus Valve Island - Input Connection

SECTION A



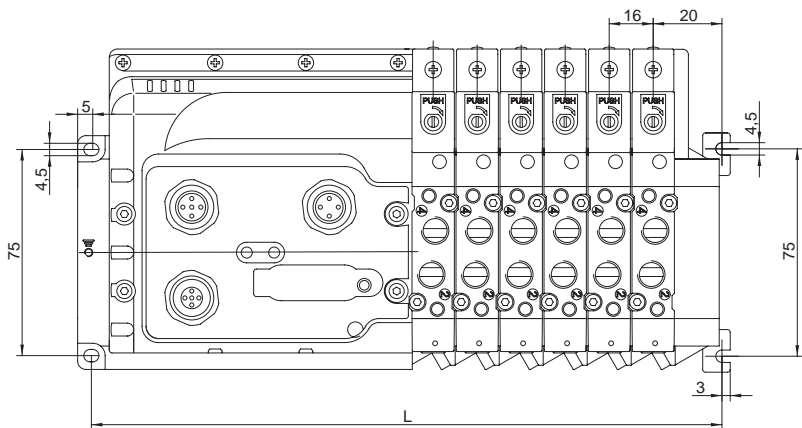
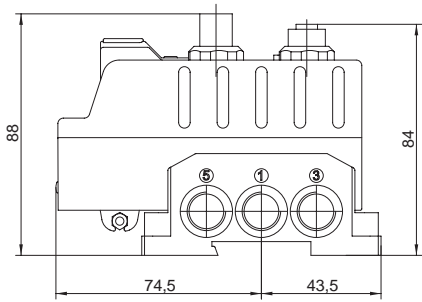
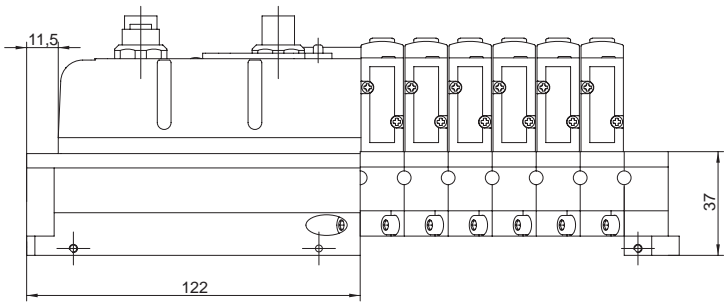
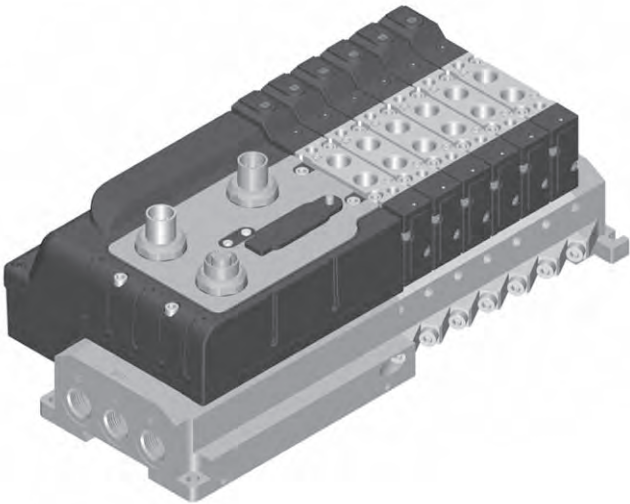
Modular Fieldbus Valve Island - Monostable

SECTION A

Valves Number: Up to 18 valve positions

Valves Type: 5/2-way monostable

Coil Type: 77.610.00.06 (24 VDC)



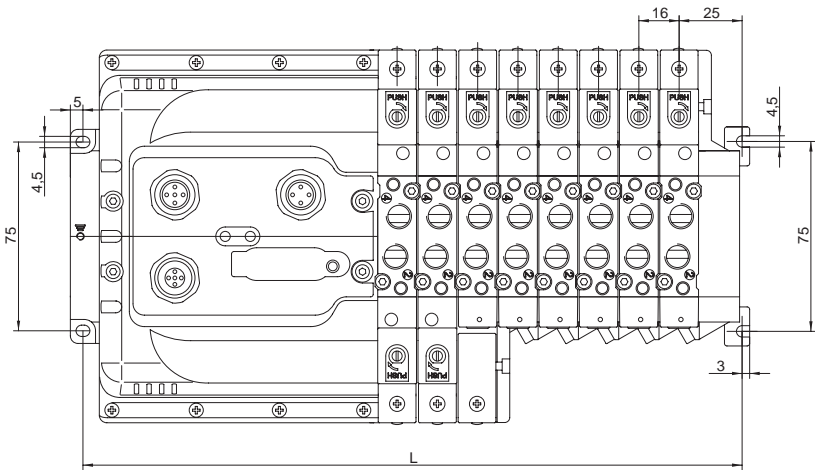
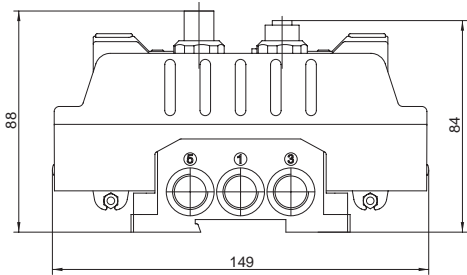
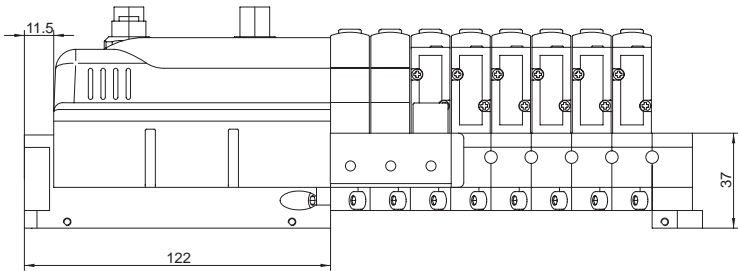
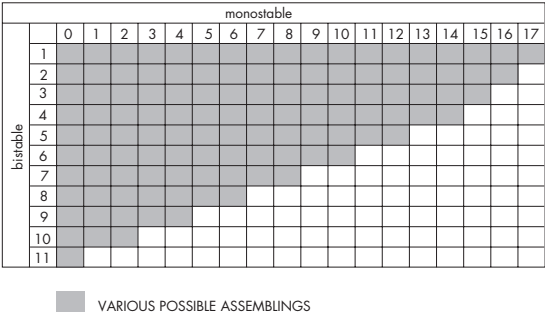
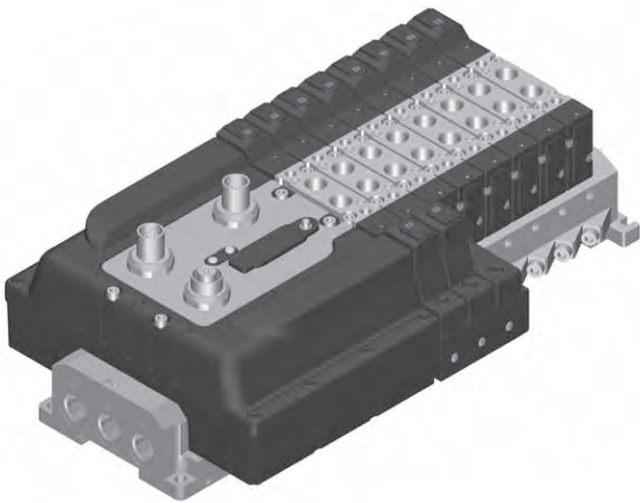
Number of Station

| | 2 | 3 | 4 | 5 | 6 | 7 | 8 | 9 | 10 | 11 | 12 | 13 | 14 | 15 | 16 | 17 | 18 |
|---|-----|-----|-----|-----|-----|-----|-----|-----|-----|-----|-----|-----|-----|-----|-----|-----|-----|
| L | 166 | 182 | 198 | 214 | 230 | 246 | 262 | 278 | 294 | 310 | 326 | 342 | 358 | 374 | 390 | 406 | 422 |

Modular Fieldbus Valve Island - Mixed Configuration / Bistable

SECTION A

Valves Type: 5/2-way mono and bistable; 2x3/2-way; 5/3-way
Coil Type: 77.610.00.06 (24 VDC)



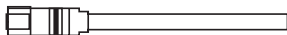
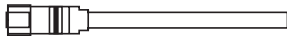
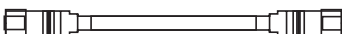
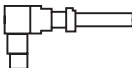

Number of Station

| | 2 | 3 | 4 | 5 | 6 | 7 | 8 | 9 | 10 | 11 | 12 | 13 | 14 | 15 | 16 | 17 | 18 |
|---|-----|-----|-----|-----|-----|-----|-----|-----|-----|-----|-----|-----|-----|-----|-----|-----|-----|
| L | 166 | 182 | 198 | 214 | 230 | 246 | 262 | 278 | 294 | 310 | 326 | 342 | 358 | 374 | 390 | 406 | 422 |

SERIES 77
FIELD BUS ISLAND

Modular Fieldbus Valve Island - Connection Cables for CANopen

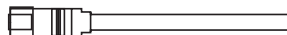
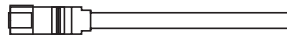
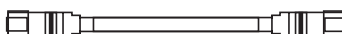
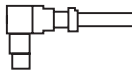
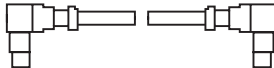
SECTION A

| | | |
|---|-------|-----------|
| <i>Power cable 24 V. M12</i> | | |
|  | 5.0 m | 77.BUS.PC |
| <i>CANopen, straight connector single sided, M12</i> | | |
|  | 5.0 m | 77.CAN.SS |
| <i>CANopen, straight connector double sided, M12</i> | | |
|  | 1.0 m | 77.CAN.DS |
| <i>CANopen, 90° connector single sided, M12</i> | | |
|  | 5.0 m | 77.CAN.SA |
| <i>CANopen, 90° connector double sided, M12</i> | | |
|  | 1.0 m | 77.CAN.DA |

SERIES 77
FIELDBUS ISLAND

Modular Fieldbus Valve Island - Connection Cables for Profibus-DP

SECTION A

| | | |
|---|-------|-----------|
| <i>Power cable 24 V. M12</i> | | |
|  | 5.0 m | 77.BUS.PC |
| <i>PROFIBUS, straight connector single sided, M12</i> | | |
|  | 5.0 m | 77.PRO.SS |
| <i>PROFIBUS, straight connector double sided, M12</i> | | |
|  | 1.0 m | 77.PRO.DS |
| <i>PROFIBUS, 90° connector single sided, M12</i> | | |
|  | 5.0 m | 77.PRO.SA |
| <i>PROFIBUS, 90° connector double sided, M12</i> | | |
|  | 1.0 m | 77.PRO.DA |

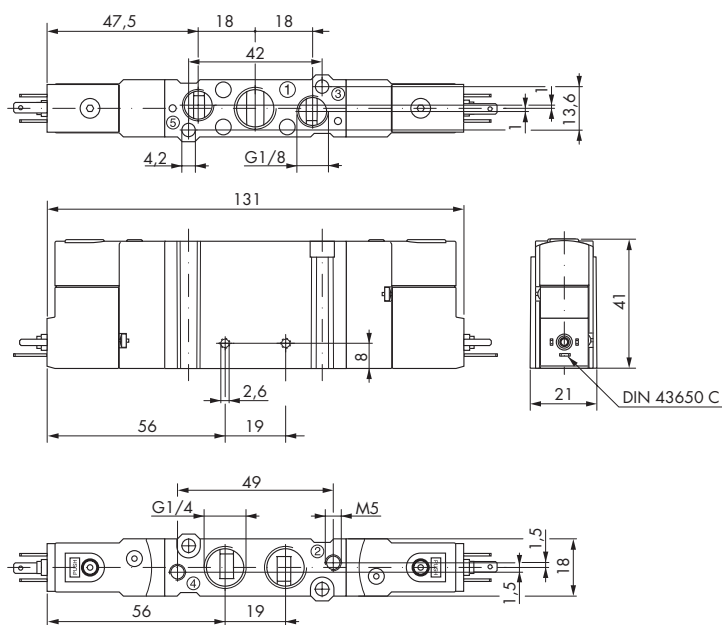
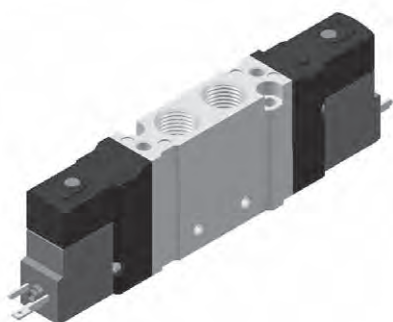
LPP772 VALVES

5/2-way and 5/3-way Solenoid Valves - G 1/8 and G 1/4 (D_{nom} 8 mm)

SECTION B

Press. Conn.: G 1/8 and G 1/4

Coil Type: 77.610.xx.xx (order separately)



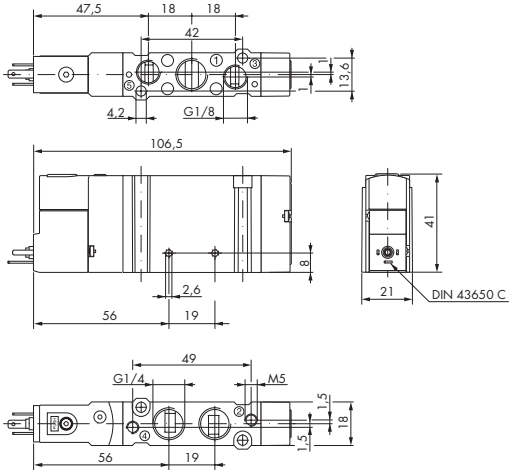
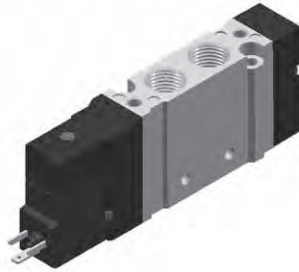
| Code | Type | Symbol | Code | Type | Symbol |
|--------------|--|--------|--------------|--|--------|
| 77.212.14.00 | 2 x 3/2 Normally closed | | 77.232.92.00 | 5/2 External feeding | |
| 77.212.24.00 | 2 x 3/2 Normally open | | 77.232.93.00 | 5/2 With priority External feeding | |
| 77.212.34.00 | 2 x 3/2 Open / closed | | 77.212.12.00 | 5/3 All ports closed | |
| 77.232.14.00 | 2 x 3/2 Normally closed External feeding | | 77.212.22.00 | 5/3 All ports exhaust | |
| 77.232.24.00 | 2 x 3/2 Normally open External feeding | | 77.212.32.00 | 5/3 All ports pressurized | |
| 77.232.34.00 | 2 x 3/2 Open / closed External feeding | | 77.232.12.00 | 5/3 All ports closed External feeding | |
| 77.212.92.00 | 5/2 | | 77.232.22.00 | 5/3 All ports exhaust External feeding | |
| 77.212.93.00 | 5/2 With priority | | 77.232.32.00 | 5/3 All ports pressurized External feeding | |

5/2-way Solenoid Valves - G 1/8 and G 1/4 (D_{nom} 8 mm)

SECTION B

Press. Conn.: G 1/8 and G 1/4

Coil Type: 77.610.xx.xx (order separately)

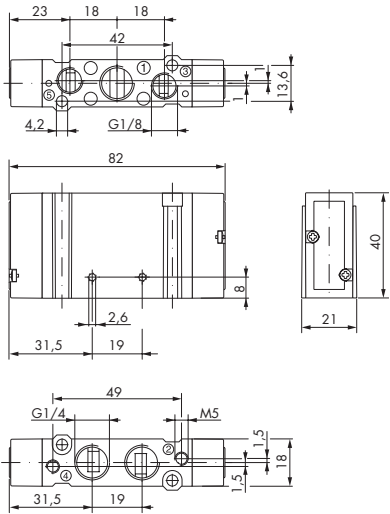


| Code | Type | Symbol | Code | Type | Symbol |
|--------------|--|--------|--------------|--|--------|
| 77.212.90.00 | 5/2 Monostable Return air assisted | | 77.232.90.00 | 5/2 Monostable External feeding Return air assisted | |
| 77.212.91.00 | 5/2 Monostable Spring return | | 77.232.91.00 | 5/2 Monostable External feeding Spring return | |

5/2-way and 5/3-way Pneumatic Valves - G 1/8 and G 1/4 (D_{nom} 8 mm)

SECTION B

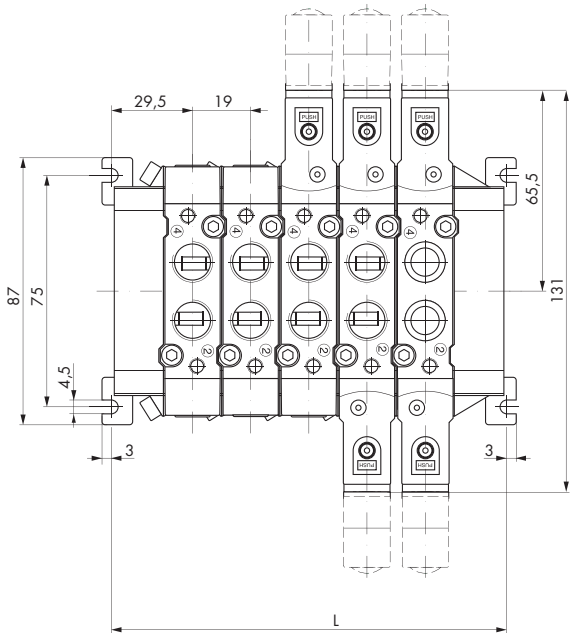
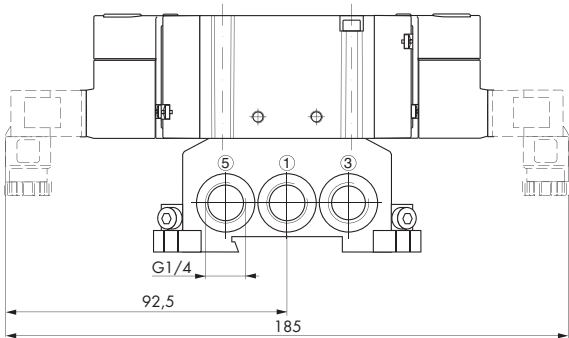
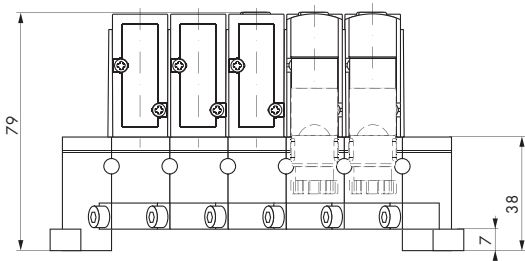
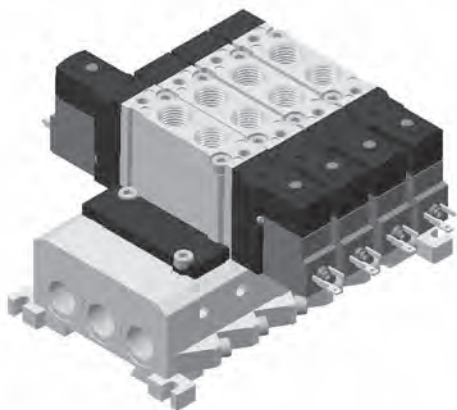
Press. Conn.: G 1/8 and G 1/4



| Code | Type | Symbol | Code | Type | Symbol |
|--------------|------------------------------------|--------|--------------|----------------------------------|--------|
| 77.222.90.00 | 5/2 Monostable | | 77.222.92.00 | 5/2 Bistable | |
| 77.222.91.00 | 5/2 Monostable Spring return | | 77.222.93.00 | 5/2 Bistable With priority | |
| 77.222.12.00 | 5/3 All ports closed | | 77.222.14.00 | 2 x 3/2 Normally closed | |
| 77.222.22.00 | 5/3 All ports exhaust | | 77.222.24.00 | 2 x 3/2 Normally open | |
| 77.222.32.00 | 5/3 All ports pressurized | | 77.222.34.00 | 2 x 3/2 Open / closed | |

Subplates System LPP772 - Valve Island

SECTION B



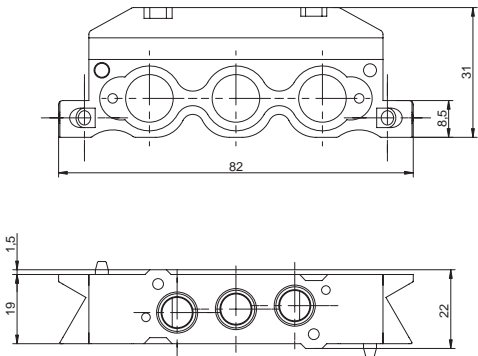
Number of Station

| Nr | 2 | 3 | 4 | 5 | 6 | 7 | 8 | 9 | 10 | 11 | 12 | 13 | 14 | 15 | 16 | 17 | 18 | 19 | 20 |
|----|----|----|-----|-----|-----|-----|-----|-----|-----|-----|-----|-----|-----|-----|-----|-----|-----|-----|-----|
| L | 78 | 97 | 116 | 135 | 154 | 173 | 192 | 211 | 230 | 249 | 268 | 287 | 306 | 325 | 344 | 363 | 382 | 401 | 420 |

SERIES 77
LPP772

Subplates System LPP772 - Subplates

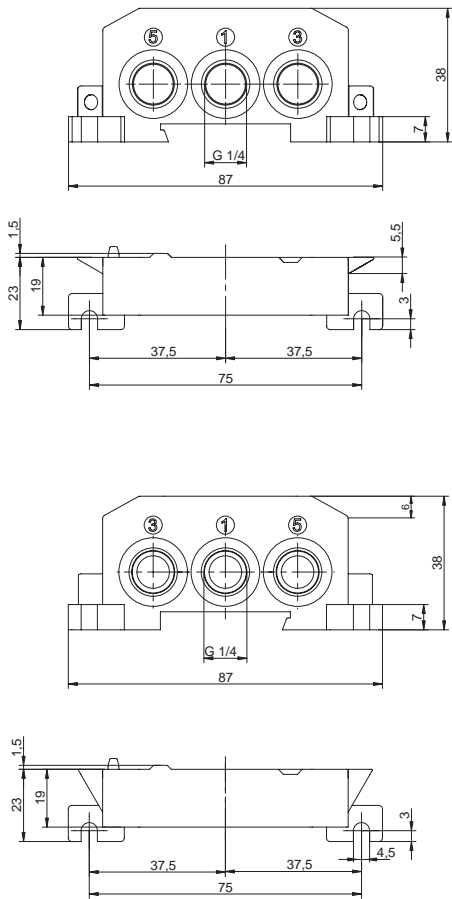
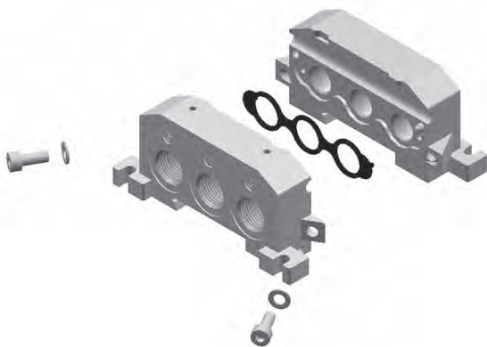
SECTION B



| Product | Code |
|--|--------------|
| Subplate kit | 77.240.00.13 |
| Subplate kit closed (the subplate is closed on the right side, the one opposite the seal seat) | 77.240.00.14 |
| Subplate kit mixed (the subplate is closed on the "P" and open in the exhaust) | 77.240.00.15 |

Subplates System LPP772 - Endplates

SECTION B

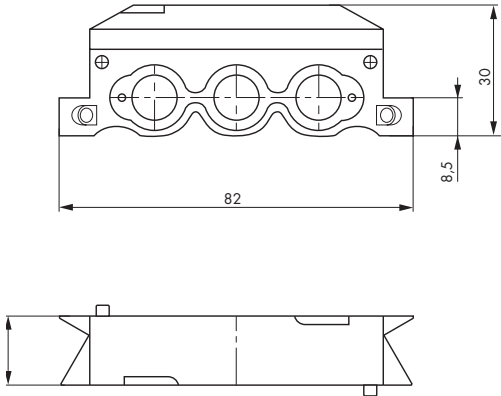
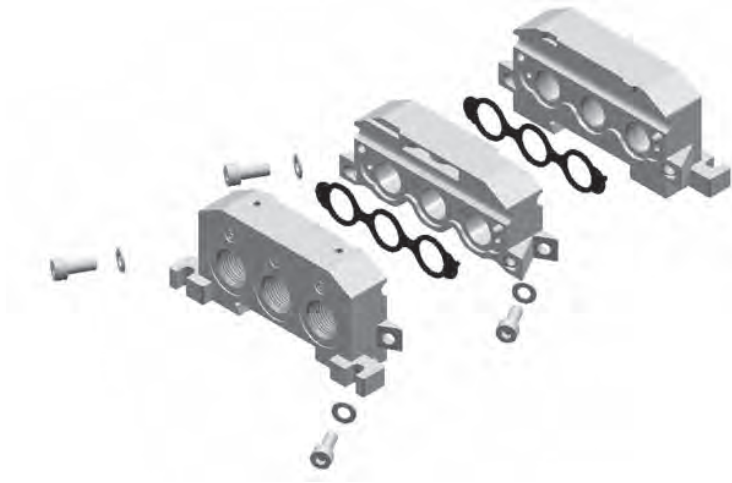


| Product | Code |
|---|--------------|
| Endplates kit, one side feeding (left and right module) | 77.240.00.18 |
| Endplates kit, both side feeding (left and right module) | 77.240.00.19 |

SERIES 77
LPP772

Subplates System LPP772 - Modules for Matching Interface

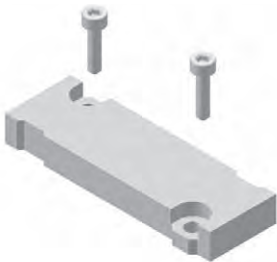
SECTION B



| Product | Code |
|--|--------------|
| Interface kit 77.0 and 77.2 (15 mm/18 mm, the kit include left, right and matching interface modules) | 77.040.15.18 |

Subplates System LPP772 - Accessories

SECTION B



Blanking plate

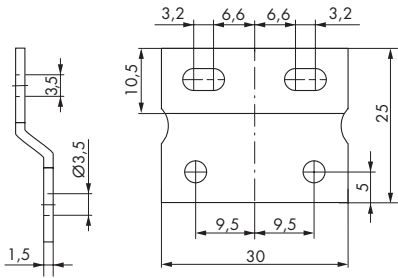


Intermediate supply



Mounting bracket

| Product | Code |
|---------------------|--------------|
| Blanking plate | 77.240.00.20 |
| Intermediate supply | 77.240.00.40 |
| Mounting bracket | 77.040.00.30 |

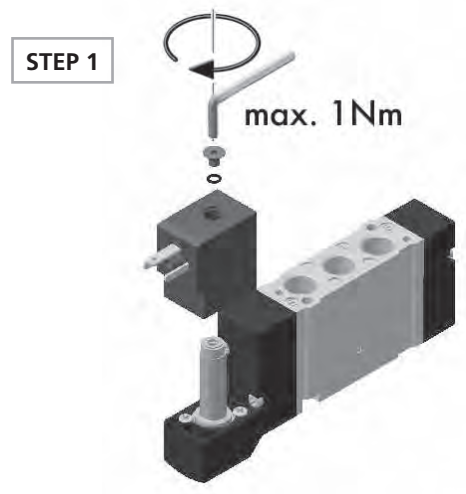


SERIES 77
LPP772

Mounting Instructions

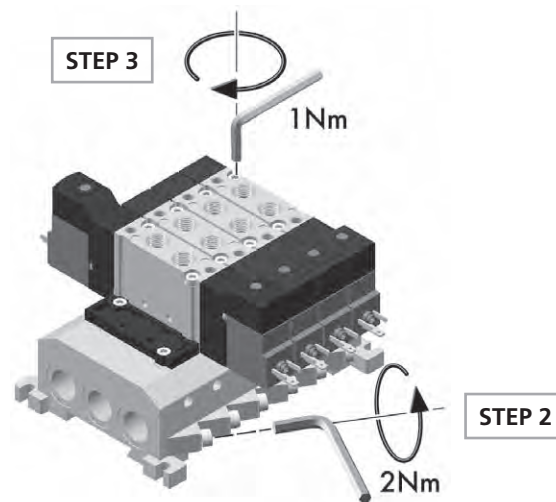
SECTION B

Assembly of solenoid systems



Assembly of valves and subplates to valve islands.

Fasten the screws alternately



COILS & PLUG-IN SOCKETS

Coils Type 77 - Details

Electrical Standards: EN 60335-1

Pull-in power: Approx. 1.6 x nominal

Insulation class: F (155 °C)

LED: None

Voltage tolerance: ± 10%

Copper enamelled wire: Temperature class H (200 °C)

Duty cycle: Continuous 100 %

Bobbin materials & cover: PA 6.6

Electrical connections: Plug in socket or flying lead connector (order separately) or Sub-D & Fieldbus

Coils for Standard Valves



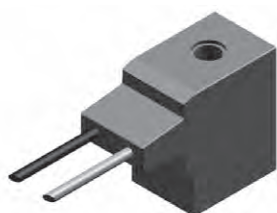
| Code | Power | Voltage | Nominal resistance | Nominal current |
|--------------|-------------------------------------|---------|--------------------|-----------------|
| 77.610.00.01 | 1.1 W DC version | 12 | 125 Ω | 96 mA |
| 77.610.00.02 | | 24 | 500 Ω | 48 mA |
| 77.610.00.03 | | 48 | 2000 Ω | 24 mA |
| 77.610.00.04 | | 110 | 10500 Ω | 10.5 mA |
| 77.610.00.11 | 2/1.7 VA (50/60Hz) AC Version | 12 | 35 Ω | 165/138 mA |
| 77.610.00.12 | | 24 | 125 Ω | 100/87 mA |
| 77.610.00.13 | | 48 | 460 Ω | 48/40 mA |
| 77.610.00.14 | | 110 | 2850 Ω | 19/16 mA |
| 77.610.00.15 | | 230 | 9000 Ω | 9/8 mA |

Coil for Sub-D and Fieldbus Valve Island



| Code | Power | Voltage | Nominal resistance | Nominal current |
|--------------|---------------------|---------|--------------------|-----------------|
| 77.610.00.06 | 1.1 W DC version | 24 | 500 Ω | 48 mA |

Coils with Flying Leads



Note: Length approx. 1000 mm

| Code | Power | Voltage | Nominal resistance | Nominal current |
|--------------|-------------------------------------|---------|--------------------|-----------------|
| 77.610.00.07 | 1.1 W DC version | 12 | 125 Ω | 96 mA |
| 77.610.00.08 | | 24 | 500 Ω | 48 mA |
| 77.610.00.17 | 2/1.7 VA (50/60Hz) AC Version | 12 | 35 Ω | 165/138 mA |
| 77.610.00.18 | | 24 | 125 Ω | 100/87 mA |

Plug-in Socket - DIN 43650 Type C

Nominal Voltage AC/DC: 250V AC/DC

Nominal current: 6 A

Contact resistance: $\leq 5 \text{ m}\Omega$

Wire cross section: max 1.0 mm²

Casing: PA6 GF

LED: none

No. of poles: 2+ground (earth position H6)

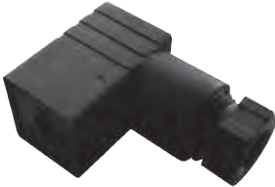
Cable screw connection: Pg 7

Protection: IP 65 (if correctly assembled)

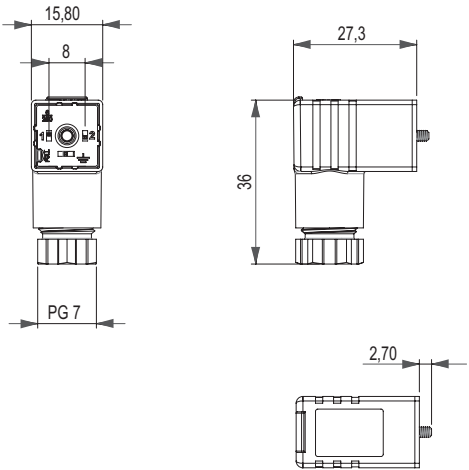
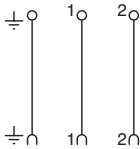
Gasket: flat

Colour: black

Ambient temperature: from -40 °C to +100 °C



| Code | Voltage |
|-------------|------------|
| PCP.00.N000 | Up to 250V |



Plug-in Socket - DIN 43650 Type C (LED)

Nominal Voltage AC/DC: see order code

Nominal current: 4 A

Contact resistance: $\leq 5 \text{ m}\Omega$

Wire cross section: max 1.0 mm²

Casing: PA12

LED: yellow

No. of poles: 2+ground (earth position H6)

Cable screw connection: Pg 7

Protection: IP 65 (if correctly assembled)

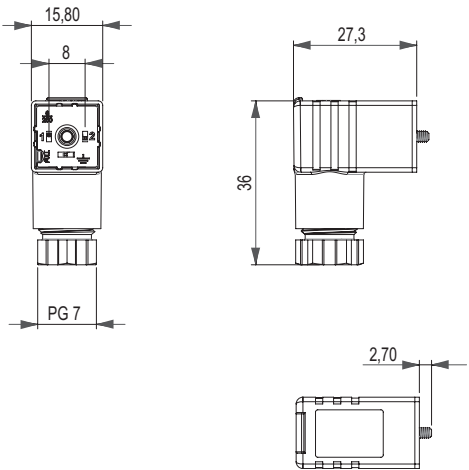
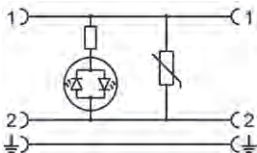
Gasket: flat

Colour: transparent

Ambient temperature: from -20 °C to +80 °C



| Code | Voltage |
|-------------|---------|
| PCP.00.Y024 | 24V |
| PCP.00.Y115 | 115V |
| PCP.00.Y230 | 230V |



PART No. INDEX

Part No. Index

| VALVE | TYPE | ID | PAGE |
|------------------|----------|--------|--------|
| 77.012.12.00 | LPP770 | 131774 | B - 7 |
| 77.012.14.00 | LPP770 | 131775 | B - 7 |
| 77.012.22.00 | LPP770 | 131776 | B - 7 |
| 77.012.24.00 | LPP770 | 131777 | B - 7 |
| 77.012.32.00 | LPP770 | 131778 | B - 7 |
| 77.012.34.00 | LPP770 | 131779 | B - 7 |
| 77.012.90.00 | LPP770 | 131780 | B - 8 |
| 77.012.91.00 | LPP770 | 84353 | B - 8 |
| 77.012.92.00 | LPP770 | 131781 | B - 7 |
| 77.012.93.00 | LPP770 | 131782 | B - 7 |
| 77.022.12.00 | LPP770 | 131805 | B - 8 |
| 77.022.14.00 | LPP770 | 107032 | B - 8 |
| 77.022.22.00 | LPP770 | 131806 | B - 8 |
| 77.022.24.00 | LPP770 | 107031 | B - 8 |
| 77.022.32.00 | LPP770 | 131807 | B - 8 |
| 77.022.34.00 | LPP770 | 106609 | B - 8 |
| 77.022.90.00 | LPP770 | 84403 | B - 8 |
| 77.022.91.00 | LPP770 | 84404 | B - 8 |
| 77.022.92.00 | LPP770 | 84405 | B - 8 |
| 77.022.93.00 | LPP770 | 131808 | B - 8 |
| 77.032.12.00 | LPP770 | 131829 | B - 7 |
| 77.032.14.00 | LPP770 | 131830 | B - 7 |
| 77.032.22.00 | LPP770 | 131831 | B - 7 |
| 77.032.24.00 | LPP770 | 131832 | B - 7 |
| 77.032.32.00 | LPP770 | 131833 | B - 7 |
| 77.032.34.00 | LPP770 | 131834 | B - 7 |
| 77.032.90.00 | LPP770 | 131835 | B - 8 |
| 77.032.91.00 | LPP770 | 84374 | B - 8 |
| 77.032.92.00 | LPP770 | 131836 | B - 7 |
| 77.032.93.00 | LPP770 | 131837 | B - 7 |
| 77.040.00.13 | LPP770 | 84454 | B - 10 |
| 77.040.00.14 | LPP770 | 117517 | B - 10 |
| 77.040.00.15 | LPP770 | 108770 | B - 10 |
| 77.040.00.18 | LPP770 | 84456 | B - 10 |
| 77.040.00.19 | LPP770 | 84457 | B - 10 |
| 77.040.00.20 | LPP770 | 117521 | B - 11 |
| 77.040.00.30 | LPP770 | 84459 | B - 11 |
| 77.040.00.30 | LPP772 | 84459 | B - 33 |
| 77.040.00.40 | LPP770 | 117523 | B - 11 |
| 77.040.15.18 | LPP770 | 85630 | B - 11 |
| 77.040.15.18 | LPP772 | 85630 | B - 33 |
| 77.04F.0018 | PROFIBUS | 117514 | B - 24 |
| 77.04F.0019 | PROFIBUS | 117515 | B - 24 |
| 77.0CMB | PROFIBUS | 131697 | B - 25 |
| 77.0CMM | PROFIBUS | 131698 | B - 25 |
| 77.0ENDL | SUB-D | 131706 | B - 17 |
| 77.0ENDR | SUB-D | 131708 | B - 17 |
| 77.0IMB | SUB-D | 117498 | B - 16 |
| 77.0IMM | SUB-D | 117500 | B - 16 |
| 77.0M2L | SUB-D | 117502 | B - 17 |
| 77.0M2R | SUB-D | 117504 | B - 17 |
| 77.0M3L | SUB-D | 117506 | B - 17 |
| 77.0M3R | SUB-D | 117508 | B - 17 |
| 77.0M4L | SUB-D | 117510 | B - 17 |
| 77.0M4R | SUB-D | 117512 | B - 17 |
| 77.0PIN (10 pcs) | SUB-D | 131718 | B - 16 |

| VALVE | TYPE | ID | PAGE |
|--------------|----------|--------|--------|
| 77.0PLUG | SUB-D | 131720 | B - 17 |
| 77.0PMB | PROFIBUS | 131722 | B - 25 |
| 77.0PMM | PROFIBUS | 131723 | B - 25 |
| 77.212.12.00 | LPP772 | 131913 | B - 29 |
| 77.212.14.00 | LPP772 | 109573 | B - 29 |
| 77.212.22.00 | LPP772 | 131914 | B - 29 |
| 77.212.24.00 | LPP772 | 109574 | B - 29 |
| 77.212.32.00 | LPP772 | 131915 | B - 29 |
| 77.212.34.00 | LPP772 | 109575 | B - 29 |
| 77.212.90.00 | LPP772 | 131916 | B - 30 |
| 77.212.91.00 | LPP772 | 84281 | B - 30 |
| 77.212.92.00 | LPP772 | 84282 | B - 29 |
| 77.212.93.00 | LPP772 | 131917 | B - 29 |
| 77.222.12.00 | LPP772 | 131937 | B - 30 |
| 77.222.14.00 | LPP772 | 109579 | B - 30 |
| 77.222.22.00 | LPP772 | 131938 | B - 30 |
| 77.222.24.00 | LPP772 | 109580 | B - 30 |
| 77.222.32.00 | LPP772 | 131939 | B - 30 |
| 77.222.34.00 | LPP772 | 109581 | B - 30 |
| 77.222.90.00 | LPP772 | 131940 | B - 30 |
| 77.222.91.00 | LPP772 | 131941 | B - 30 |
| 77.222.92.00 | LPP772 | 84333 | B - 30 |
| 77.222.93.00 | LPP772 | 131942 | B - 30 |
| 77.232.12.00 | LPP772 | 131963 | B - 29 |
| 77.232.14.00 | LPP772 | 169318 | B - 29 |
| 77.232.22.00 | LPP772 | 131964 | B - 29 |
| 77.232.24.00 | LPP772 | - | B - 29 |
| 77.232.32.00 | LPP772 | 131965 | B - 29 |
| 77.232.34.00 | LPP772 | - | B - 29 |
| 77.232.90.00 | LPP772 | 131966 | B - 30 |
| 77.232.91.00 | LPP772 | 131967 | B - 30 |
| 77.232.92.00 | LPP772 | 131968 | B - 29 |
| 77.232.93.00 | LPP772 | 131969 | B - 29 |
| 77.240.00.13 | LPP772 | 84460 | B - 32 |
| 77.240.00.14 | LPP772 | 84461 | B - 32 |
| 77.240.00.15 | LPP772 | - | B - 32 |
| 77.240.00.18 | LPP772 | 117524 | B - 32 |
| 77.240.00.19 | LPP772 | 84463 | B - 32 |
| 77.240.00.20 | LPP772 | 84464 | B - 33 |
| 77.240.00.40 | LPP772 | 117525 | B - 33 |
| 77.610.00.01 | COILS | 84322 | B - 35 |
| 77.610.00.02 | COILS | 84323 | B - 35 |
| 77.610.00.03 | COILS | 132664 | B - 35 |
| 77.610.00.04 | COILS | 132666 | B - 35 |
| 77.610.00.06 | COILS | 131990 | B - 35 |
| 77.610.00.07 | COILS | 132668 | B - 35 |
| 77.610.00.08 | COILS | 132670 | B - 35 |
| 77.610.00.11 | COILS | 132672 | B - 35 |
| 77.610.00.12 | COILS | 84327 | B - 35 |
| 77.610.00.13 | COILS | 132675 | B - 35 |
| 77.610.00.14 | COILS | 132677 | B - 35 |
| 77.610.00.15 | COILS | 84330 | B - 35 |
| 77.610.00.17 | COILS | 132680 | B - 35 |
| 77.610.00.18 | COILS | 132682 | B - 35 |
| 77.BUS.PC | PROFIBUS | 132651 | B - 28 |
| 77.BUS.PC | PROFIBUS | 132651 | B - 28 |

Part No. Index

| VALVE | TYPE | ID | PAGE |
|--------------|----------|--------|--------|
| 77.CAB (5 m) | SUB-D | 132652 | B - 16 |
| 77.CAN.DA | PROFIBUS | 132653 | B - 28 |
| 77.CAN.DS | PROFIBUS | 132654 | B - 28 |
| 77.CAN.SA | PROFIBUS | 132655 | B - 28 |
| 77.CAN.SS | PROFIBUS | 132656 | B - 28 |
| 77.PRO.DA | PROFIBUS | 132657 | B - 28 |
| 77.PRO.DS | PROFIBUS | 132658 | B - 28 |
| 77.PRO.SA | PROFIBUS | 132659 | B - 28 |
| 77.PRO.SS | PROFIBUS | 132660 | B - 28 |
| PCP.00.N000 | PLUG | - | B - 36 |
| PCP.00.Y024 | PLUG | - | B - 36 |
| PCP.00.Y115 | PLUG | - | B - 36 |
| PCP.00.Y230 | PLUG | - | B - 36 |
| PCP.00.Y115 | PLUG | - | B - 36 |
| PCP.00.Y230 | PLUG | - | B - 36 |



BSG Kuhnke Solutions S.r.l.

Via R. Colpi, 38
35010 Limena (PD) - Italy

Tel. +39 049 86 57 711
Fax +39 049 88 41 571

sales@bsgkuhnkesolutions.com
www.bsgkuhnkesolutions.com